



Royal Hospital for Neuro-disability

Royal Hospital for Neuro-disability Archive Service :  
Digital copy

ROYAL HOSPITAL FOR NEURO-DISABILITY:  
Administration: Governance records:  
Annual reports

Annual report, 1953

Ref No : GB 3544 RHN-AD-1-9

# THE ROYAL HOSPITAL AND HOME FOR INCURABLES, PUTNEY

*Incorporated by Royal Charter*

(Supported by Voluntary Contributions)

---

Instituted in the year 1854

---



*View of Hospital from Beaumont Road in 1892*

## REPORT

For Year ended 30th September, 1953

## PATRONS.

HER MAJESTY QUEEN ELIZABETH II.  
HER MAJESTY QUEEN ELIZABETH THE QUEEN MOTHER.

## VICE-PRESIDENTS.

THE MOST HON. THE MARQUESS OF NORTHAMPTON.  
SIR PERCY GREENAWAY, Bt.  
THE RIGHT HON. LORD COURTAULD-THOMSON, K.B.E., C.B.  
SIR HARRY TWYFORD, K.B.E.  
THE RIGHT HON. LORD ROBOROUGH, D.L.  
THE RIGHT HON. LORD DULVERTON, O.B.E., J.P.

## THE BOARD OF MANAGEMENT.

†\*NORMAN MORRIS, Esq., *Chairman*.  
†FRANCIS M. G. GLYN, Esq., J.P., *Treasurer*.

- |  |  |
|--|--|
| * THE RIGHT HON. LORD<br>AMULREE, M.D., F.R.C.P. | * MRS. F. G. PATERSON                              |
| * MRS. ARNOLD.                                   | † J. G. PHILLIMORE, Esq., C.M.G.                   |
| * ALDERMAN CYRIL BLACK, J.P.,<br>M.P., C.C.      | * COLONEL G. F. PHILLIPS,<br>C.B.E., D.S.O.        |
| * MRS. WILSON BLACK.                             | * RICHARD S. SEYMOUR, Esq.,<br>M.V.O.              |
| * MISS C. A. BOURNE                              | * LADY SHONE                                       |
| * SIR HENRY CHILTON, G.C.M.G.                    | * BRIGADIER A. E. STOKES-<br>ROBERTS, O.B.E., M.C. |
| * MRS. W. J. H. HUNTER.                          | † ALDERMAN SIR DENIS H.<br>TRUSCOTT, T.D.          |
| SIR HUGH N. LINSTAD,<br>O.B.E., M.P.             | † CHARLES HYDE VILLIERS, Esq.,<br>M.C.             |
| * T. G. MARRIOTT, Esq.                           | * MRS. E. G. WALKER.                               |
| † COLONEL A. T. MAXWELL.                         | * THE LADY WEBB-JOHNSON.                           |
| * CLIVE MORRIS, Esq.                             | * SIR RICHARD WINSTEDT,<br>K.B.E., C.M.G., F.B.A.  |
| LADY NEWNES                                      |  |

\* Member of House Committee.  
† Member of Finance Committee.

HONORARY CONSULTING SURGEON.  
SIR MAX PAGE, K.B.E., C.B., D.S.O., M.S., F.R.C.S.

CONSULTING PHYSICIAN.  
ARTHUR H. DOUTHWAITE, Esq., M.D.

CONSULTING OPHTHALMIC SURGEON.  
GERARD G. PENMAN, Esq., M.D., F.R.C.S.

VISITING OPHTHALMIC SURGEON.  
W. E. S. BAIN, Esq., F.R.C.S.

CONSULTING NEUROLOGIST.  
M. CRITCHLEY, Esq., M.D., Ch.B., F.R.C.P.

CONSULTANT FOR RHEUMATIC DISEASES.  
W. S. C. COPEMAN, Esq., O.B.E., M.D., F.R.C.P.

CONSULTING ORTHOPAEDIC SURGEON.  
J. C. R. HINDENACH, Esq., M.D., F.R.C.S.

CONSULTING RADIOLOGIST.  
E. H. ALLEN, Esq., M.R.C.S., L.R.C.P., D.M.R.E.

SURGEON-DENTIST.  
GERALD AGNEW, Esq., L.D.S., F.P.S.

MEDICAL OFFICER TO THE ESTABLISHMENT.  
MRS. V. KENDALL, M.R.C.S., L.R.C.P.

SECRETARY.  
BRIGADIER R. M. VILLIERS, D.S.O.

MATRON.  
MISS K. M. CORBETT, S.R.N., S.C.M.

CHAPLAIN.  
THE REV. B. LONEY.

STEWARD.  
W. C. LAYLAND, Esq.

ACCOUNTANT.  
N. W. STEVENS, Esq., A.H.A.

APPEAL SECRETARY.  
MRS. C. A. GURNEY

BANKERS.  
MESSRS. GLYN, MILLS & Co., 67, Lombard Street, E.C.3.

SOLICITORS.  
MESSRS. FARRER & Co., 66, Lincoln's Inn Fields, W.C.2.

AUDITORS.  
MESSRS. HELMORE, HELMORE & Co.,  
Chartered Accountants, 3, Grosvenor Gardens, S.W.1.

CONSULTING ENGINEER.  
COLONEL MAURICE BLAND, O.B.E., M.Inst.C.E., A.M.I.E.E.,  
36, Chartfield Avenue, Putney, S.W.15.

ARCHITECT.  
R. M. PIGOTT, Esq., J.P., M.C., F.R.I.B.A., 3, Cromwell Place, S.W.7.



## ANNUAL REPORT

THE Board of Management has much pleasure in presenting to the Governors the Annual Report and audited accounts for the year ended the 30th September, 1953.

### The Patients

"I'm so glad to come here, as now I know I shall get better." Those were the first words spoken by a new patient only a few months ago, and they may seem strange sentiments to come from a patient in a Hospital for Incurables, but they are an example of the courage and faith shown by our patients. The condition of that patient, a girl of 32, has already improved to a marked degree.

There have been 12 admissions during the year to fill normal vacancies—10 women and two men. In addition, it has been possible to accept 10 paying patients, by taking into use again wards which had been used



*The old —*

for other purposes for some years. It is hoped to open a further six beds for this purpose in the course of a few weeks, which will bring our total number of beds to 260.

The decision to admit paying patients was made by the Board in October, 1952, purely on financial grounds. They pay either the full cost of their maintenance or the greater part of it, but in all other respects they are treated exactly the same as all our other patients. Before admittance they are subject to the same careful scrutiny by the House Committee as those who apply for the normal vacancies, and they have to comply with the same medical conditions. After admittance they receive the same medical treatment, have the same food and share all amenities with the rest. It was a matter of satisfaction to the Board that they were able to find additional beds for the paying patients, and were thus able to admit them without prejudicing or delaying the admission of those already on the waiting list.

It was also on financial grounds that the Board asked the House Committee to review the incomes of all our patients, with a view to asking those who could afford it to make a regular voluntary contribution to the funds. This involved a personal interview by members of the House



*— and the new*

Committee with nearly all the patients, and was a long and somewhat embarrassing task, but the response of the patients was splendid, and, as a result, the income of the Hospital and Home under this heading will be raised by over £2,000. The Board has been careful to ensure that all patients have sufficient pocket money left for their own personal needs, and care has been taken to avoid hardship in cases where there are special problems involved.

#### Pensioners

The Board's policy is to reduce the number of pensioners till the amount expended on pensions is equal to the income received from Trust Funds created for that purpose. Thus no new pensions are awarded unless a vacancy occurs for a specific pension for which the nomination is vested in the donor. At the same time, no pension has been suspended unless the pensioner's conditions have altered in such a way as to make this necessary under the Home's Charter. The most usual example of this is when a pensioner becomes a patient in a hospital or Home which is wholly maintained by the Ministry of Health or by a Local Authority. There have been 15 such cases during the year and 17 deaths, so that the number of pensioners is now 250. As will be seen in the accounts, £7,563 were paid in pensions during the year.



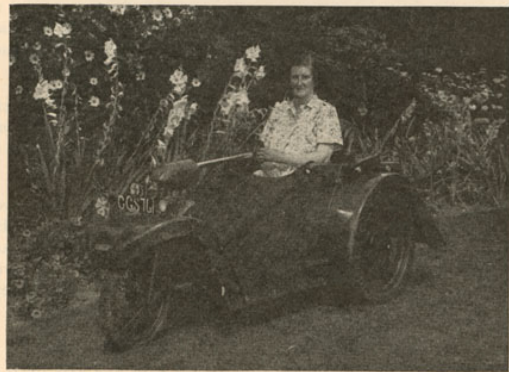
The old —

#### The Board of Management

After the three tragic deaths in October, 1952, of Sir Edward Maclagan, Mr. Cross and Sir Gerald Lenanton, which were briefly reported in the last Annual Report, it is with relief that we record no further gaps in the ranks of the Board. Vacancies have been filled by Miss Constance A. Bourne, who has long been associated with the Hospital and Home as a member of the Authorised Lady Visitors and as Honorary Librarian, and by Lady Shone, whose experience in America of hospital work, and particularly in rehabilitation problems, is already proving a great asset.

#### The Staff

It was with much regret that the Board received the resignation of Dr. Badenoch, who had been Medical Officer of the Hospital and Home for nearly six years. Under her guidance the physiotherapy department was enlarged and the occupational therapy department was started, and a modern system of medical records for all patients was initiated. On the advice of the Medical Committee, the Board appointed Dr. Kendall to the post, and she has already shown that she is a worthy successor to Dr. Badenoch. The Board takes this opportunity of welcoming her to the staff.



— and the new



There have been a number of changes in the staff of the physiotherapy and occupational therapy departments, and the Board welcomes Mrs. Kay as Superintendent Physiotherapist in the place of Miss Glazier who resigned in March. Both departments are extending the scope of their activities.

On the nursing staff, Sister Frow has resigned after being Sister Housekeeper for 16 years and Sister Thomas after 10 years as a Ward Sister. Mr. Curtis, the Head Male Attendant, has also resigned on account of age, after 20 years' service. The Board thank all these retiring members of the staff for their long and faithful service to the Home.

Mrs. East, who had the difficult task of starting the Appeals Department three years ago, resigned last Christmas. She had the responsibility of seeing that the Hospital's income did not drop with the abolition of the voting system, and so effective was her method that a sharp rise in subscriptions and donations was recorded. The Board welcomes Mrs. Gurney as the new Appeals Secretary.

#### Patients' Activities

The Coronation was naturally the reason for much rejoicing and excitement, and everything possible was done to give all patients an opportunity of joining in the celebrations. Thanks to the co-operation and generosity of the Not Forgotten Association, their wonderful new coach, which takes wheeled-chairs, was made available to take patients along the Coronation route, and 52 patients enjoyed these drives during the week before the Coronation.

On the day itself, five television-sets, including one forward projection set, were distributed throughout the Day Rooms and wards. Snack lunches were served to the patients as they viewed the ceremony so that there would be the minimum disturbance.

During the following week's Coronation drive, the Wandsworth Borough Council kindly allotted space to our patients near the Town Hall, and patients had an opportunity of seeing Her Majesty and the Duke of Edinburgh as they were received by the civic dignitaries of Wandsworth and neighbouring boroughs. Afterwards, Miss Bowdery was interviewed by the B.B.C. and was heard by the other patients in the Hospital and Home.

The Annual Sale of Work was held on the 20th and 21st May, and was opened by Her Royal Highness Princess Alice, Countess of Athlone.

As usual, a large crowd came to buy the patients' work and over £1,400 were subsequently distributed by the Sale Committee to workers and non-workers. The Board are again indebted to Mrs. Black, the Chairman of the Sale of Work Committee, and to her helpers for organising this popular function.

Matron again arranged a most enjoyable series of concerts, and the Board wishes to record its appreciation of the artistes who so generously gave their time and skill in this way. Where so much talent is given it may seem invidious to single out anyone for special mention, but everyone is glad to hear that Miss Irene Scharrer is returning to give another pianoforte recital. The show given by the Magic Circle in memory of Mr. David Devant was better than ever, if that is possible.

Other long-established activities continue, notably the patients' choir, which always gives one concert, as well as the recital of carols at Christmas. The R.H.H.I. Branch of Toc H and the Toc H Women's Association each meet weekly, with two patients, Mr. Tavender and Mrs. Bouchier, as honorary secretaries. Nineteen patients are members of the Putney Branch of the Trefoil Guild, who meet regularly under arrangements made by Miss Hardeman. We have again to thank Mr. Bennett and his fellow



Hospital Shop



Rotarians of Putney for organising the patients' summer outing. Whist drives and a draughts competition all go to fill up the days, and it is not surprising that a patient was recently heard to say: "Oh! Matron, I simply haven't got time for anything else."

It has been usual in previous Reports to allot a separate paragraph devoted to the Chaplain's Report. A re-arrangement of this year's Report does not mean that there has been any diminution of this vitally important work. On the contrary, the Rev. B. Loney, our Chaplain, has proved a tower of strength and comfort. The mid-week and Sunday services have been well attended, and there was a full Assembly Room to hear the Bishop of Kingston preach on Whit Sunday. Our internal wireless relay also enabled ward patients to hear the service on their ear-phones. The Board is glad that the Rev. P. Audemarde is available to take the Baptist services regularly in place of the Rev. R. A. J. Cusden, whose sudden death came as a shock to all his friends.

Our photograph shows the new shop which has been open only a few weeks, to replace the trolley shop which used to visit the Day Rooms twice a week. The new shop, which was made by the works staff, can carry a wider variety of goods than the mobile shop and, thanks to the voluntary workers who so kindly give their time to serve it, it is open every afternoon and some mornings. The shop is available to visitors as well as patients and, though the margin of profit is purposely kept small, its takings help in a modest way to increase the income of the General Fund. The Board feel that this shop satisfied a real need, though it is still necessary to take the trolley shop round the wards for the benefit of those patients who cannot get downstairs regularly.

#### Finance

The Income and Expenditure Account, provided at the back of this Report, shows a deficit of £15,051. Though disappointing, this has come as no surprise to the Board, as the estimated budget, prepared a year ago, showed an expected deficit of some £20,000, but some explanation will be of interest.

On the income side, voluntary gifts are down by £5,437 compared to the previous year. Apart from the fact that we had no B.B.C. appeal and no Ball this year, old subscribers die or are forced by taxation to discontinue their subscriptions, and new subscribers are hard to find. Receipts from Central Funds are less this year, as the King Edward's Hospital Fund were unable to assist as in previous years.

It will be noted that contributions from patients have risen by £4,110 over the previous year. This is not only the result of the interviews mentioned earlier in the Report (which only date from August) but because in the previous year contributions from old patients admitted under the voting system, which amount to about £2,000, were included under the heading of voluntary gifts. The income from paying patients this year was £2,200 and covers only the last seven months of the year.

In spite of the sale of some stocks and shares to meet the deficit, receipts from invested property have risen by £5,314. For this the Board are indebted to Messrs. Helbert, Wagg & Co. Ltd., who act as investment advisers to the Board. As was mentioned in the previous Report, permission has been received from the Privy Council to widen the scope of our capital investments, and during the year the Finance Committee have approved many changes recommended by Messrs. Helbert, Wagg, with the successful results shown. The book value of investments held at 30th September, 1953, was £404,000 as compared with £434,000 a year previously. It is gratifying to note, however, that the market value has increased from £417,000 to £423,000, due to a general rise in share values, and to the wise investment policy of the Finance Committee.

Finally, on the income side, are the legacies, which once again have saved the situation. £44,890 were received this year, which, though less than the peak figure of £59,485 received last year, shows a welcome gain on the average. The Board acknowledges its indebtedness to those who have so generously remembered the Hospital and Home in their wills, and cannot emphasise too strongly that they hope that all those who subscribe so regularly during their lives will make some provision for this Hospital in their wills.

The expenditure shows an increase of £3,700 or three per cent. over last year's figures. Of this, no less than £2,400 was due to the extra cost of provisions. Salaries and wages also rose by £4,000. The rise in the cost of food and nationally negotiated scales of wages are beyond the control of local administration, and it was only through economies in other fields that the overall rise in expenditure was kept to a reasonable figure. A comparison with other years shows that whereas in 1951 it cost £404 to keep a patient, the figure had risen to £436 last year and is £457 this year. Having set a standard of living for our patients, which is high without being luxurious, the Board are loath to reduce it, and firmly believe that ways and means of raising sufficient income to maintain that standard can and must be found.





BALANCE SHEET as at 30th SEPTEMBER, 1953

LIABILITIES		ASSETS	
£	s. d.	£	s. d.
I. SUNDRY CREDITORS—		I. CASH AT BANK AND IN HAND	
(1) Amounts due to patients	9,623 3 6	HAND	17,325 7 0
(2) Paying patients' fees in advance	1,555 1 0	II. STOCKS OF UNISSUED CONSUMABLE STORES ON HAND	3,898 11 5
Balance at 30th September, 1952	396,516 10 8	III. SUNDRY DEBITORS	2,287 3 11
Less Excess of Expenditure over Income	35,051 9 3	IV. INVESTMENTS, GENERAL FUND, AT COST	353,809 0 8
Less Net Loss on Sale and Exchange of Investments	381,465 1 5	V. IMPROVEMENTS TO BUILDINGS (since Oct. 1, 1950)	2,948 8 8
Balance at 30th September, 1953	369,311 7 2	VI. SPECIAL FUNDS—	
Other Pension Funds (see contra)	6,567 7 8	Brodie Sewell Pension Fund—	
Louisa Lucas Pension Fund	2,072 4 8	Investment at Cost	6,367 7 8
Other Pension Funds—Investments at Cost	35,375 5 4	Louisa Lucas Pension Fund—	
Loose's Chaplain's Endowment Fund	3,970 15 1	Investment at Cost	2,095 13 3
Suspense Fund	500 0 0	Cash at Bank	12 11 2
Doulton Fund	253 11 11	Other Pension Funds—Investments at Cost	2,072 4 5
Patients' Funeral Fund	1,406 9 2	Investment at Cost	35,375 5 4
	50,830 9 1	Skevington Fund—Investment at Cost	3,970 15 1
		Dispensary Fund—Cash on Deposit at Bank	884 15 6
		Dispensary Fund—Investments at Cost	500 0 0
		Cash in Hand	220 8 1
		Investments at Cost	33 3 10
		Patients' Funeral Fund—	
		Investment at Cost	253 11 11
		Cash in Post Office Savings Bank	1,000 0 0
		Cash in Post Office Savings Bank	406 9 2
			1,406 9 2
			£431,099 0 9

NOTES: (1) No credit has been taken in the Investments for the value of the Home, Furniture and Effects (except for Item V. opposite).  
 (2) The Market Value of the Investments (including Patients' Funeral Fund) at the date of this Balance Sheet was £432,617.

We have examined the above Balance Sheet dated 30th September, 1953, and the attached Income and Expenditure Account for the year to that date with the books and vouchers relating thereto and certify the same to be in accordance therewith. We have verified the whole of the investments and bank balances.  
 28th October, 1953.  
 3, Grosvenor Gardens, London, S.W.1.

(Signed) HELMORE, HELMORE & CO.,  
 Chartered Accountants.

Legacies and Residuary Bequests received during the Year ended 30th September, 1953.

	£	s.	d.
ALSTON, Miss C. B.	26	5	5
BARRATT, Miss S.	100	0	0
BEABY, Mrs. S. T.	200	0	0
BEATLEY, Miss K.	800	0	0
BENNETTS, A.	160	11	2
BINKS, Mrs. E. G.	25	0	0
BROWN, J. E.	100	0	0
BURROWS, Mrs. E.	657	4	10
CADLE, S.	100	0	0
CAMPBELL, Miss F. N.	50	0	0
CARR, Miss F. E.	391	4	4
CLAPP, Mrs. M. A.	4,734	12	3
COLQUHOUN, Miss M. A.	25	0	0
DAVISON, M.	100	7	1
EVANS, J.	625	5	1
FARQUHARSON, Mrs. G. E.	389	1	2
FLOWER, Miss H.	37	19	3
GAME, Miss E. M.	54	11	5
GAZE, Miss A. M. S.	100	0	0
GEERE, Mrs. D. T.	250	0	0
GORE, Mrs. I. M.	157	10	0
GREEN, T. L.	653	13	7
GREENHILL, Mrs. M. E.	100	0	0
GREENWOOD, Miss F. A.	449	6	4
GREWING, H. J.	1,391	9	2
GUILE, Miss E. S.	97	16	10
HALL, Mrs. E. M.	37	3	2
HAMPTON, G. F.	25	16	0
HELEY, Miss A.	221	3	3
HENSHAW, Mrs. C. L.	2,394	1	6
HENSLEY, E. H. E.	100	0	0
HIGGINS, Miss ROSE	40	19	2
HOLLOWAY, Miss E. C. M.	50	0	0
Carried forward	14,646	1	0

Legacies and Residuary Bequests received during the  
Year ended 30th September, 1953—continued.

	£	s.	d.
Brought forward	14,646	1	0
HOOPER, MRS. C. B. ....	5,983	16	7
INGLIS, LADY REBECCA... ..	532	16	7
JACKSON, C. A. C. ....	8,269	4	7
JEFFERY, MRS. C. E. ....	500	0	0
JOHNSON, W. ....	100	0	0
LAW, C. ....	225	0	0
LIGHT, E. F. ....	2,018	2	8
MACKINTOSH, MISS I. D. ....	232	13	11
MANSELL, MISS R. ....	25	0	0
MASON, T. ....	100	0	0
MILLER, MISS E. L. ....	50	0	0
OLDROYD, MISS E. E. ....	26	5	0
PANNELL, MISS E. ....	5,000	0	0
PEEL, DOWAGER VISCOUNTESS	500	0	0
RASHLEIGH, MISS C. L. ....	503	8	2
RUTTER, SIR F. W. PASCOE ...	528	7	10
SADGROVE, MISS M. ....	1,000	0	0
SAUNDERS, H. A. ....	250	0	0
SHAW, MRS. H. W. ....	635	8	5
SHILLINGFORD, MISS E. M. ...	500	0	0
SKYRME, MISS M. A. B. ....	850	1	10
STAINES, A. J. ....	500	0	0
TEBBUTT, THE REV. W. E. ....	100	0	0
WESTLAKE, MISS A. E. ....	680	5	9
WHITBY, MISS L. ....	186	18	3
WOODS, F. E. ....	587	18	7
YARDLEY, A. T. ....	358	7	10
AMOUNTS UNDER £20	52	12	3
	44,942	9	3
REFUND (F. W. ALSOP)... ..	52	2	8
	£44,890	6	7

The following new patients have been admitted during the year :—

Name	Date of Admission	Previous place of residence
SAYERS, Miss Evelyn M. ....	2.10.52	Leatherhead, Surrey
TUFNELL, Miss Florence K. ...	10.11.52	Croydon, Surrey
ROSIER, Mrs. Helena ... ..	4.12.52	Woodbridge, Suffolk
BOTTEN, Miss Elsie ... ..	9.12.52	London
SANDERS, Miss May ... ..	6. 1.53	Taunton, Somerset
OATES, Mr. John ... ..	8. 1.53	Wokingham, Berkshire
BURN, Miss Stella V. ....	9. 2.53	Oxford.
TOW, Miss Winifred M. ....	12. 2.53	London
PARSONS, Miss Frances M. ...	16. 2.53	London
HATFIELD, Miss Dora F. ....	18. 2.53	London
BUXTON, Miss Diana E. ....	25. 2.53	Felixstowe, Suffolk
BARRETT, Mrs. Beatrice A. ...	2. 3.53	London
STEVENSON, Miss Alice J. ...	10. 3.53	Madeley, Shropshire
ISMAY, Miss Lily F.... ...	11. 3.53	Cranleigh, Surrey
BAKER, Mr. Frank T. ....	19. 3.53	Cookham, Berkshire
MORRIS, Mr. Horace C. M. ...	20. 3.53	London
MILLER, Miss Edith L. ....	26. 3.53	London
HAMON, Miss Lilian F. ....	30. 3.53	Southsea, Hampshire
DENSLOW, Mrs. Florence M. ...	8. 6.53	London
HAYNES, Miss Rosamund ... ..	11. 6.53	Woking, Surrey
HEATH, Miss Olive M. ....	15. 6.53	Brentford, Middlesex
GOLDING, Mr. Philip C. J. ...	16. 6.53	Pyrford, Surrey
CRANE, Miss Hilda P. ....	22. 6.53	Hull, Yorkshire
CHAPMAN, Mrs. Edith A. ....	24. 6.53	Tewkesbury, Gloucestershire
NEWMAN, Mrs. Ida F. ....	29. 6.53	London
BATE, Mrs. Caroline E. ....	1. 7.53	London
SANDGREN, Mrs. Diana C. ....	29. 7.53	London
BISHOP, Miss Christina C. ....	23. 9.53	London
DAVIES, Mrs. Anne C. ....	23. 9.53	Bournemouth, Hampshire
BONIFACE, Miss Bertha ... ..	28. 9.53	Reading, Berkshire



The Board regret to announce the deaths of the following patients :—

Name	Date	Period in R.H.H.I.
TEECE, Miss Margaret A. ... ..	18.10.52	3 years 6 months
BARTON, Miss Lilian A. ... ..	31.10.52	20 " 10 "
CHAPLIN, Miss Victoria ... ..	18.11.52	13 "
GAMBLES, Mrs. Ethel M. ... ..	20.12.52	3 " 4 "
NICHOLS, Mrs. Charlotte ... ..	10. 2.53	3 " 5 "
PRIEST, Miss Mildred ... ..	12. 2.53	38 " 1 month
CONSTABLE, Mr. William J. ... ..	20. 2.53	7 " 1 "
HILL, Miss Ellen L. ... ..	26. 2.53	25 "
KELLY, Miss Rosa M. ... ..	10. 3.53	1 year 9 months
CATTON, Miss May A. ... ..	12. 3.53	14 years 2 "
MORRIS, Mr. Horace C. M. ... ..	10. 4.53	1 month
MILLER, Miss Edith L. ... ..	22. 5.53	2 months
OATES, Mr. John ... ..	23. 5.53	4 "
PARSONS, Miss Frances M. ... ..	24. 5.53	3 "
BUXTON, Miss Diana E. ... ..	4. 6.53	3 "
NICHOLLS, Miss Mary A. ... ..	3. 8.53	20 " 6 "
SALMON, Miss Florence A. ... ..	9. 9.53	5 " 1 month

### FORM OF BEQUEST

I give to THE ROYAL HOSPITAL AND HOME FOR INCURABLES, PUTNEY, the sum of £ \_\_\_\_\_, free of duty, and I declare that the receipt of the Treasurer or other proper officer for the time being thereof shall be a sufficient discharge for the same.

*N.B.—By virtue of the "Mortmain and Charitable Uses Act, 1891," land may be devised to a Charity, but it is liable to be sold within one year from the death of the Testator unless the Court or the Charity Commissioners authorise its retention.*

(NOTE.—When a Will has been already made, and it is afterwards desired to benefit the Home, it will be sufficient if the form on the other side is filled up, detached, duly signed by two witnesses in like manner as the Will itself, and kept with the existing Will.)





