



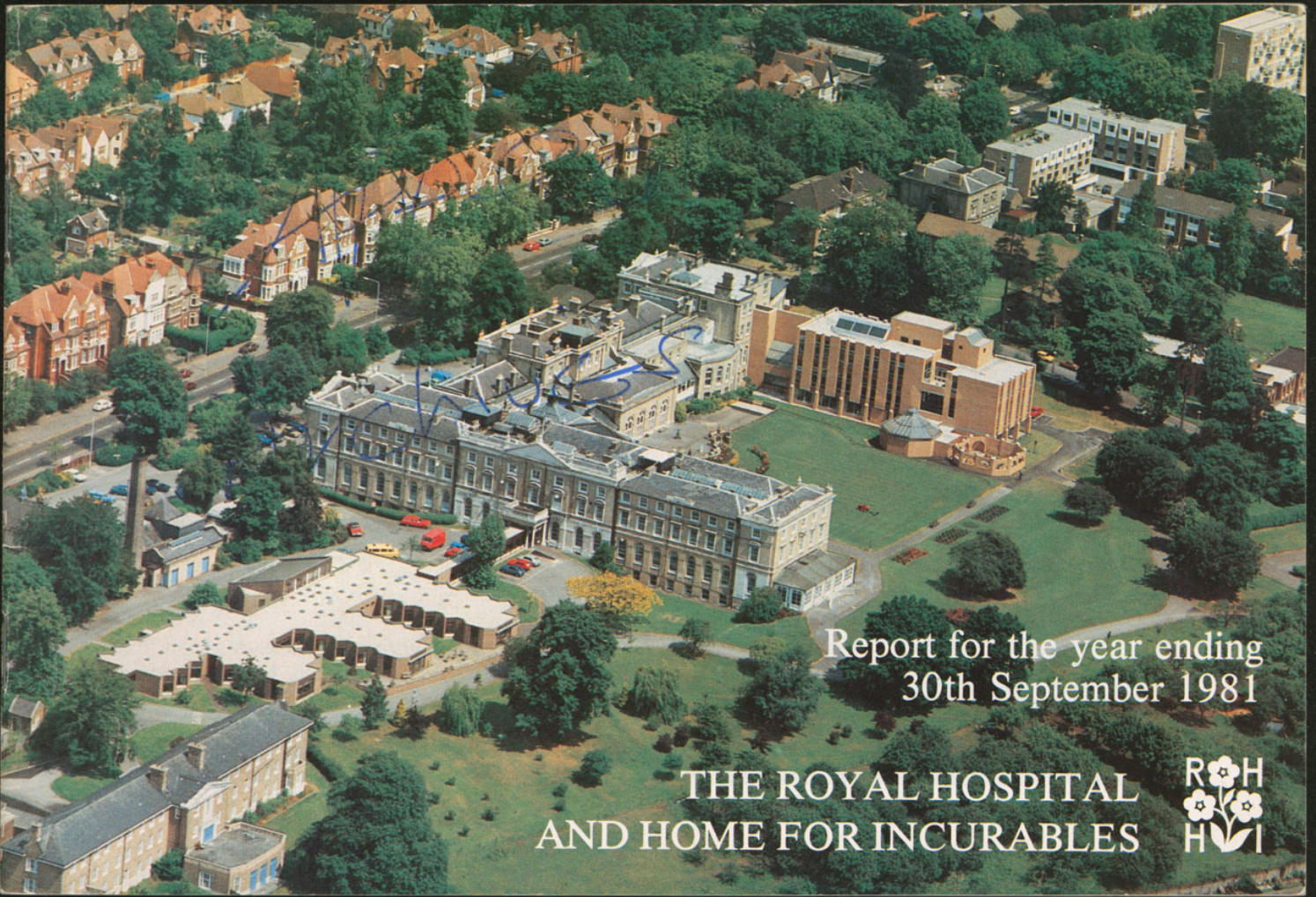
Royal Hospital for Neuro-disability

Royal Hospital for Neuro-disability Archive Service :
Digital copy

ROYAL HOSPITAL FOR NEURO-DISABILITY:
Administration: Governance records:
Annual reports

Annual report, 1981

Ref No : GB 3544 RHN-AD-1-9



Report for the year ending
30th September 1981

THE ROYAL HOSPITAL
AND HOME FOR INCURABLES





We were greatly favoured to receive a visit from H.R.H. Princess Alexandra on 11th December 1980 to open our new Alexandra Wing for research and rehabilitation. It was a most memorable day with over 1500 guests, friends and relatives in the Hospital, over and above our patients and staff.

PATRONS

HER MAJESTY THE QUEEN
HER MAJESTY QUEEN ELIZABETH THE QUEEN MOTHER

PRESIDENT

HIS GRACE THE DUKE OF DEVONSHIRE *PC MC*

VICE-PRESIDENTS

THE LORD ROBOROUGH <i>JP LLD</i>	SIR DENIS TRUSCOTT <i>GBE TD JP</i>
JACK van ZWANENBERG <i>Esq</i>	THE RIGHT HON MARGERY LADY HACKING <i>OBE</i>
GENERAL SIR HORATIUS MURRAY <i>GCB KBE DSO</i>	THE RIGHT HON LORD AMULREE <i>KBE MD FRCP</i>
LADY SHONE	THE WORSHIPFUL THE MAYOR OF WANDSWORTH <small>(ex officio)</small>

BOARD OF MANAGEMENT

**† C G VAUGHAN-LEE Esq DSc Chairman
**† MRS AUDREY ARBUTHNOT Vice Chairman
† GORDON H POPHAM Esq Treasurer

* J N AGATE Esq CBE MA MD FRCP	** MRS BETTY KROOK †	A T REED Esq FCA
SIR IAN BANCROFT GCB	* MRS A J MEGLAUGHLIN SRN †	LEO SEYMOUR Esq
† M C BAUGHAN Esq	* J N MENDELSSOHN Esq *	MISS U A THOMAS
J J D BULLMORE Esq	* MRS JOHN MENDELSSOHN JP **†	MAJOR GENERAL SIR LESLIE TYLER KBE CB BSc(Eng) CEng FIMechE
* J F BURRELL Esq CVO	† LADY NORTON MBE	D WADDINGTON Esq
MRS JENNIFER COOKE	* MRS SHIRLEY PALMER	SIR BRIAN WINDEYER KT FRCP
**† MRS ELSA DUNBAR CBE	† T PARRINGTON Esq	FRCS FRCS FRCS DMRE
MRS G I HABERSHON	* MRS ESMÉ POLLITZER JP	
** M J P KEATING Esq FBM First Pat.	* LIEUTENANT-COLONEL R READHEAD DSO DL MA FBM	

* Member of the Executive Committee † Member of the Finance Committee * Member of the House Committee

RESEARCH ADVISORY COMMITTEE

SIR BRIAN WINDEYER KT FRCP FRCS FRCS FRCS DMRE Chairman
Professor A N EXTON-SMITH MA MD FRCP
J N AGATE Esq CBE MA MD FRCP
C J EARL Esq MD BS FRCP
C G VAUGHAN-LEE Esq DSc
JACK van ZWANENBERG Esq

MEDICAL STAFF COMMITTEE

J N AGATE Esq CBE MA MD FRCP Chairman
A CATTERALL Esq FRCS Consultant Orthopaedic Surgeon
R KELLY Esq MD FRCP Consultant Neurologist
F S COOKSEY Esq CBE MD FRCP Consultant in Physical Medicine
R GRAHAME Esq MD FRCP Consultant Physician in Rheumatic Diseases
W E S BAIN Esq FRCS Visiting Ophthalmic Surgeon
DR C JEAN DOW MRCP FRCP Visiting Radiologist
A P H RANDLE Esq FRCP D Phys Med Consultant in Rheumatology and Rehabilitation
G STERN Esq MD FRCP Consultant Neurologist

SECRETARY & CHIEF EXECUTIVE

Colonel B E BLUNT BA FBM

DIRECTOR OF MEDICAL & RESEARCH SERVICES

J WEDGWOOD Esq MA MD FRCP
CONSULTANT ADVISERS TO RESEARCH DEPARTMENT
E BOOTH Esq C Eng Ml Mech E (Engineering)
G WYLLIE Esq B Sc C Eng MIEE (Electronics)
RESEARCH FELLOW
C B PARKER Esq FDS RCS (Eng)

MATRON & DIRECTOR OF NURSING SERVICES

Miss M BLINCOE SRN RSCN Rv RNT
CONSULTANT NURSING EDUCATION
MISS M A SHOUT SRN RNT

PRINCIPAL MEDICAL OFFICER

DR MAUREEN A TUDOR MB BS D Obst RCOG

MEDICAL OFFICERS

W J HASTINGS SAYERS Esq LRCP LRCS LRFPs
A G HUFF Esq MB BS(London) D Obst RCOG MRCPG
DR HAZEL RICHARDSON MA BM BCh(Oxon) MRCPG
DR IVY TRAILL MB BS

PRINCIPAL THERAPY OFFICER

A Mc L DOWELL Esq BA MCSP Dip TP

DENTAL SURGEONS

B OLIVER Esq LDS
R J HUNTER Esq LDS RCS

SUPPLIES & CATERING OFFICER

W H BIRD Esq
CONSULTANT HEALTH & SAFETY
J R JARRATT Esq M Sc C Chem FRCS CGIA MIIBO Dip SM

CHIEF ACCOUNTANT

A O HOWIE Esq CA FBM

CHIEF PHARMACIST

K M ROHLFING Esq AUA MPS FRSH

DIRECTOR OF APPEALS & PUBLICITY SECRETARY OF THE DEVELOPMENT TRUST FOR THE YOUNG DISABLED

AIR COMMODORE D F RIXSON OBE DFC AFC FBM

BANKERS

WILLIAMS' & GLYN'S BANK LTD 67 Lombard Street EC3

SOLICITORS

MESSRS FARRER & CO 66 Lincoln's Inn Fields WC2

INVESTMENT BANKERS

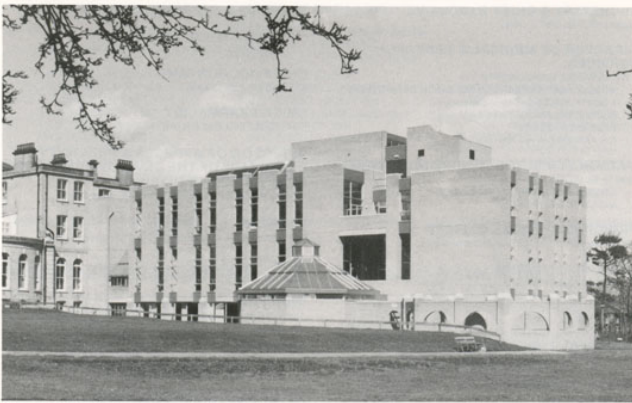
J HENRY SCHRODER WAGG & CO LTD 120 Cheapside EC2

AUDITORS

MESSRS HELMORE HELMORE & CO Chartered Accountants 35/37 Grosvenor Gardens SW1

ADVERTISING CONSULTANTS

J WALTER THOMPSON & CO LTD 40 Berkeley Square W1



Alexandra Wing for Research and Rehabilitation.

Into the 1980s

This year the Hospital and Home has been given substantial improvements in its accommodation at Putney. Our new Alexandra Wing is a unique and forward looking concept. It provides some of the best therapy facilities in the country, including a hydrotherapy pool, where a coordinated medical, therapeutic and nursing team seek to improve the quality of life of those in our care. Its well equipped lecture theatre and conference area are now in full use for seminars on every aspect of severe disability and our research projects. In particular, Alexandra Wing has provided the opportunity for the R.H.H.I. to become a focus for research into the care of the Young Chronic Sick. Despite the difficult financial climate, the Board of Management decided to go ahead with other improvements, which would stand the Hospital in good stead for the next decade.

A new Pharmaceutical Department and Sterile Production Unit was opened in May. With this new facility our pharmaceutical staff are able to manufacture pharmaceutical and sterile products themselves, and to handle the ever increasing demands for the special pharmaceuticals and foods, which our patients require.

All the windows in patients' living areas in the Main Hospital have been double glazed. This includes all

bedrooms, lavatories, bathrooms and day rooms. It has not only made these rooms free from draughts, but it will also significantly reduce our heating costs.

The Douglas Gracey Verandah has been completely refurbished, as the result of a generous gift from a benefactor, as a day room for use all the year round.

The Occupational Therapy Department has been substantially upgraded with the help of a large gift from the King Edward's Hospital Fund for London and other donations. This includes a new Patients' Kitchen, which is used not only for teaching and assessment in the use of kitchen and eating aids, but it also provides a facility for patients to entertain their friends themselves. In addition, a new Occupational Therapy Work Room and a much larger Aids-to-Daily-Living Room have been constructed, together with the general redecoration of the Art and Craft Room.

Research

Rehabilitation of the incurable may seem a contradiction in terms, but, although our patients cannot be cured, they can be helped.



The new Douglas Gracey Verandah.

The experience and skill of the nursing staff, occupational therapists, physiotherapists and speech therapists can overcome many of the frustrations frequently experienced in acute disability. Where speech is affected, communication can be improved and mechanical aids can effectively restructure and enrich the patient's way of life.

The aim of the Hospital's research is to improve our own knowledge and experience of these problems and to make this experience available to others. Not only the staff but the resident population of the Hospital have a great deal to contribute in this field, for disabled patients are often best able to advise on the design of equipment which will help themselves and others like them. Our research programmes are carried out in partnership with our patients, and many research projects are now under way, directed both by Dr. John Wedgwood and our own research staff and by external researchers. The Hospital is also involved in the evaluation of equipment associated with severe physical handicap.

Teaching

Eight one-day seminars have been held during the year in our conference facilities, which have been filled to their capacity of 75 with representatives from all over the country and occasionally from overseas. In many ways equally important are the post-graduate discussions

which have taken place each month. In the nursing field courses approved by the Joint Board of Clinical Nursing Studies are run in the hospital for Registered and Enrolled Nurses. We have also appointed a Nursing Officer to be responsible for induction courses and in-service training for nursing auxiliaries and aides in the Hospital.

The Pharmacy Department continues to train post-graduate pre-registration pharmacists, and this year we have started to train our own pharmacy technicians as well.

The Development Trust for the Young Disabled

The capital cost of Alexandra Wing was £1,500,000. This cost was underwritten by the Trust and it was met on completion by our legacies' income over the period, balanced by Trust donations. The Trust is also funding current research projects. An International Seminar on "The Long Term Care of Disabled People" was sponsored by the Trust at Drapers' Hall on 13th January 1981. This seminar was attended by 120 eminent people from all parts of the United Kingdom and from five overseas



An Artist's impression of improvements to John Howard House.

Patient at the Hospital Shop.

countries, and it gave a lead nationally to The International Year of Disabled People. The Trust will play a big part in financing a further project for the Hospital next year. This is the provision of a therapy extension to John Howard House at Brighton, which will cost about £160,000. Donations to the Development Trust for this extension would be very much appreciated, and the Chairman is most grateful to all those who have already contributed.

opportunity is being taken to extend the day room area and, by various internal modifications, to achieve bedrooms for three additional resident patients. When the improvements have been completed we will have the capacity for caring for up to 6 day patients from the Brighton area, in addition to 33 resident patients.

Improvements to John Howard House

John Howard House at Brighton is regarded as a separate wing of the Main Hospital. Between April and September every year almost 100 patients from the Main Hospital at Putney enjoy a fortnight's holiday at Brighton, and the resident patients at John Howard House have a change by coming to Putney.

The Board of Management has long felt that the remedial therapy accommodation at John Howard House should be improved, and it has now decided to go ahead with a new therapy wing, which should be finished by the middle of next year. At the same time the

Our Patients

Admissions

Thirty resident patients have been admitted and their average age has been 50 years. The average age throughout the hospital, covering all 270 patients, is 59 years.

Holidays

This year we have increased the number of patients admitted for a short stay, in order to give their partners and themselves a break from their normal way of life. The holidays by patients from Putney to John Howard House have been extremely popular as always, and even more patients than usual have been away on privately arranged holidays, including visits to Lourdes, Portugal, Holland, Switzerland, Majorca and Jersey.



The Lecture Theatre in its other use as a Remedial Gymnasium.

Day Patients

With the provision of additional therapy facilities in Alexandra Wing we have been able to increase the number of day patients at Putney to 40 day sessions per week. The advantages of this to the patients are that quite often they are likely to become resident patients at a later date and daily attendance gives them a chance to become accustomed to the Hospital. It also gives our staff an opportunity of assessing and getting to know them, and everyone, patients and staff alike, benefits from seeing new faces in the Hospital.

Staff

Departures

The most momentous change has been that Mrs M C Bodington, who had been Matron and Director of Nursing Services for 14 years, retired on 31st January 1981. She was completely dedicated to the Hospital and her devoted nursing and compassionate care for her patients was in the highest traditions of the nursing service. She is greatly missed by the Board of Management, the patients and the staff alike, and we wish her a very happy retirement. We are pleased to welcome Miss Mary Blincoe, who has joined us from St. Bartholomew's Hospital, in her place.

New Appointments

We were very fortunate in obtaining the services, as Principal Therapy Officer, of Squadron Leader Alan Dowell from the Royal Air Force. His previous appointment at the RAF Rehabilitation Centre, Headley Court, involved the training of therapy staff at all Royal Air Force hospitals, and the specialised supervision at this world famous station. His appointment coincided with the establishment of our Research and Rehabilitation teams in Alexandra Wing, which are now making such rapid and successful progress.

Thank You to our Staff

The R.H.H.I. cannot function without a dedicated and hard working staff, and the Board of Management wish to express their gratitude to every member of staff for all their efforts during this year.

The Board of Management

Resignation

Professor John Treasure has resigned from the Board due to business commitments. He is warmly thanked for all his past services to the Hospital.



The Refurbished Occupational Therapy Workroom.



The Haslemere Hydrotherapy Pool.



A physiotherapy session.



The Country Market at John Howard House.



The Patients' Garden Club.



The Lecture Theatre.



The Jessie Dean Classroom.

New Appointments

Sir Ian Bancroft and Sir Brian Windeyer are welcomed to the Board and Professor A N Exton-Smith and Dr C J Earl to the Research Advisory Committee.

A Tribute to all who help us

County Committees

They really excelled themselves this year and the committees have raised more money than ever before. Although the Garden Party at Putney began with a shower of rain, it turned out to be a beautiful afternoon, and was very much enjoyed by everyone. The Country Market at Brighton broke all records for attendance and the amount raised. The Board of Management express their thanks to the organisers and all those who worked so hard to make both these occasions such a success.

Authorised Visitors and Voluntary Helpers

The Hospital owes an immense debt to the Authorised Visitors, who are each responsible for making regular visits to up to 6 patients. Their task requires much time, patience and devotion and how well they do it! The

Board of Management is also most grateful to the Voluntary Workers, who not only do so much to help our patients, but also relieve the pressure on our paid staff by undertaking all sorts of additional duties, such as running the Patients' Shop.

Legacies

£215,409 has been received in legacies this year, which is only just short of our record year in 1979/80.

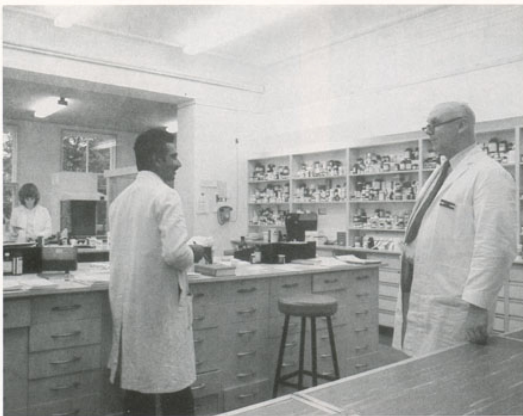
The Board of Management greatly depend on legacy support for all capital expenditure and we emphasise that legacies are used for this purpose, and not for the day-to-day maintenance of the Hospital. Gifts of up to £200,000 to the R.H.H.I. are now free of tax and the addition of a codicil to an existing will is all that is necessary. A legally correct form of words, prepared by the Charity's solicitors, is included on the back page of this report.

Finance

Details of this year's income and expenditure and the balance sheet are set out at the end of this report.

Renewed thanks

In concluding their report to the Governors, the Board



The new Pharmacy.

of Management reiterates its most sincere thanks to its loyal staff and to all those who have helped the Hospital and Home in so many ways this year.

No charity can hope to flourish in these difficult times without such devotion and generosity. The marvellous support that we have received from every side inspires

and encourages us to re-double our efforts to advance the scope of the R.H.H.I.'s work for the cause of the incurably disabled.

B E BLUNT
Secretary and Chief Executive

All Governors of the R.H.H.I. are reminded that they are cordially invited to attend the Annual General Meeting in the Alexandra Wing Lecture Hall at the Hospital on Wednesday 13th January 1982 at 2.30 pm. The meeting will be presided over by our President, His Grace the Duke of Devonshire.



The Occupational Therapy Assessment Room.



Legacies and Residuary Bequests Received

Year ended 30th September 1981

	£		£		£
A'BEAR, Miss D M E	15,039	I'ANSON, Mrs L M	2,460	TARRANT, Miss M W	125
ADAMS, Mrs L A	7,500	JEX, E D	100	TAYLOR, C J G	583
ANDERSON, J	146	KNIGHT, H M	10,000	THORNTON, W	223
ANDERSON, Mrs M F	200	LASCELLES, Miss C	250	WARTON, Miss D I	285
ANDERSON, Dr T F	98	LAW, C	3,051	WELCH, Miss A	500
BEALE, G W S	1,000	LAWRENCE, Miss I B B	1,216	WEST, Miss A M	1,260
BEATON, Z D M	500	LONGMAN, Mrs M E	167	WEST, Miss E G	807
BOWEN, Miss D M	10,000	LUTHER, Miss W	7,614	WHITE, Miss E H	86
BOWKER, Miss L A	2,030	McCRAE, D W	136	WHITE, Miss M	620
CHANDLER, G H	4,917	MALPAS, Miss E M	4,320	WILLIAMS, Miss E R	100
CLUTTON, Mrs H	9,000	MARSTON, D A W	250	WILSHERE, Miss P N	2,000
COLE, Mrs W E	1,949	MASKELYWE, Miss D E	1,000	WOOD, A D	150
COPE, Mrs E M	8,778	MILES, L	1,041	Amounts under £50 (8)	157
CORNE, Mrs K E	500	NAYLOR, Mrs G M	500	Refunds of Income Tax	14,568
COX, Miss K V	5,100	NEIL, Miss E K F	1,200		
DANES, Mrs S G	3,110	NORTON, Mrs E	1,736		
DAVIS, Miss D G	1,000	PENNEFATHER, Mrs S R	100		
DEAN, Miss J E	39,000	de POMEROY, Miss G E	1,000		
DODWORTH, Mrs E	200	PULLAN, Mrs I	204		
EGERTON-GREEN, Mrs A H	500	SELLAR, F R	1,358		
GRAHAM, W E W	26,186	SIMPSON, Mrs R F	573		
GRICE, Mrs D A	15,000	SMITH, Mrs R M	723		
HEARD, Mrs L G	2,167	STEWART, Miss E S	1,026		
					<u>215,409</u>

Income and Expenditure Account
for the year ended 30 September 1981

1980	NOTE	GENERAL FUND	RESEARCH FUND	OTHER FUNDS	TOTAL FUNDS
£		£	£	£	£
INCOME					
138,201		148,625	8,110		156,735
2,505,586	2	2,993,281			2,993,281
259,656	3	116,105	83,915	25,714	225,734
		14,517		(14,517)	
2,903,443		3,272,528	92,025	11,197	3,375,750
EXPENDITURE					
164,669		181,256			181,256
Cr. 29,743	4 & 5	5,566		5,566	
196,209	5	247,740	15,000		262,740
2,007,078	8 & 6	2,399,007	33,934		2,432,941
76,935	5	92,137	20,897	955	113,989
99,434	5	121,220	5,809		127,129
203,450	5	147,225			147,225
78,005	5	95,387	12,926		108,313
Cr. 141		940			940
8,355				7,565	7,565
2,801,351		3,290,678	88,566	8,520	3,387,764
102,092		(18,150)	3,459	2,677	(12,014)

Balance Sheet
as at 30 September 1981

1980	NOTE	GENERAL FUND	RESEARCH FUND	OTHER FUNDS	TOTAL FUNDS
£		£	£	£	£
ASSETS EMPLOYED					
Fixed Assets					
14,874		18,401			18,401
1,566,921	7	532,963	666,462	225,582	1,425,037
Current Assets					
533,286		555,227	3,826		559,053
81,295		57,156	1,300		58,456
160,734		22,619	2,350	3,168	104,384
108,472		98,636			98,636
853,787		933,700	7,506	3,168	944,374
Current Liabilities					
505,363		413,327	753		414,580
94,000		4,000			4,000
599,363		417,327	753		418,580
254,424		515,873	6,753	3,168	525,794
1,836,219		1,067,267	673,215	228,750	1,969,232
FINANCED BY					
2,026,099		813,562	797,030	225,527	1,836,219
259,782		215,409	204,255		419,664
200,000	8				200,000
72,500					72,500
84,853					84,853
163					163
2,653,497		1,114,906	996,671	226,073	2,337,650
(919,370)	9 & 10	(29,491)	(326,919)		(356,406)
102,092			3,459	2,677	12,214
1,836,219		1,067,267	673,215	228,750	1,969,232

We have examined the above Balance Sheet dated 30 September 1981 and the attached Income and Expenditure Account for the year to that date with the books and vouchers relating thereto, which are in accordance therewith. We have verified the whole of the investments and bank balances as provided by the Royal Charter granted on 20 June 1919.

HELMORE, HELMORE & CO., Chartered Accountants
35/37 Grosvenor Gardens, London SW1 0BY

1 December 1981

Notes on the Accounts

1. ACCOUNTING POLICIES:

- 1.1 Income is taken to the credit of the revenue account on an accruals basis.
 - 1.2 Amounts received from legacies are allocated to capital account.
 - 1.3 Expenditure is charged to the revenue account on an accruals basis inclusive of VAT.
 - 1.4 Expenditure on buildings, furnishings and equipment is written off in the year in which the expenditure is incurred. The Balance Sheet therefore shows no value for hospital premises, land, nurses' homes, staff housing, furniture and equipment.
 - 1.5 Donated equipment is shown as a gift of capital and within capital expenditure at the cost to the donor.
 - 1.6 Fixed Assets comprises ambulances and vans which are capitalised and depreciated straight-line over the estimated working life.
2. VOLUNTARY GIFTS (General Fund)
- | | 1981 | 1980 |
|-----------------------------|---------|---------|
| | £ | £ |
| Subscriptions and donations | 117,885 | 111,963 |
| Garden Party | 6,128 | 8,898 |
| County Committees | 23,512 | 18,236 |
| Alexandra Day | 1,100 | 1,300 |
| | 148,625 | 138,195 |
- In addition to the voluntary gifts shown above the Development Trust for the Young Disabled has donated £5,110 to meet revenue expenditure on a specific Research project.

3. INVESTMENT INCOME

	1981	1980
	£	£
is shown after deducting Investment Bankers' fees as follows:		
General Fund	917	1,435
Research Fund	918	843
	1,835	2,278

4. DISPENSARY

Income for the year	188,912	195,801
Less: Cost of prescriptions	194,478	166,058
	5,566 Cr.	29,743

5. SALARIES AND WAGES are included in other sections for the following:

	1981	1980
	£	£
Dispensary (under Dispensary)	47,749	40,092
Laundry (under Domestic)	59,909	54,354
Grounds Maintenance (under Miscellaneous)	11,527	11,458
Administration	104,962	97,232
Appeals and Pensions	37,893	31,250
	262,070	224,386

6. SALARIES AND WAGES of Medical, Nursing, Therapy, Research, Domestic and Engineering staff is shown after deducting Lodging and Meals

	66,749	53,685
--	--------	--------

7. INVESTMENTS

FUND	1981		1980	
	Book Value	Market Value	Book Value	Market Value
	£	£	£	£
General	532,994	741,789	656,447	973,567
Research	686,462	580,590	686,691	695,263
Endowment	93,507	81,021	93,457	91,967
Pensioners	84,774	93,815	83,026	107,609
Lopes - Chaplain's Stipend Endowment	1,727	1,732	1,727	1,874
Robinson Trust	25,717	43,119	27,717	61,801
Patients' Amenities	4,472	4,466	4,472	4,234
Sir John Howard Trust	15,384	12,464	15,384	13,640
	1,425,037	1,538,996	1,566,921	1,903,855

8. GIFTS OF CAPITAL

Development Trust for the Young Disabled	Research Fund	£
		204,255

9. CAPITAL EXPENDITURE WRITTEN OFF

	General Fund	Research Fund
	£	£
Construction cost of Alexandra Wing		289,506
Equipment and Furnishing		37,409
Refurbishing dispensary	29,491	
	29,491	326,915

10. CAPITAL COMMITMENT

The estimated amount outstanding, including Consultant's fees, on the contract for the construction of Alexandra's Wing	£ 62,077
---	----------

11. OTHER FUNDS

	Endowment	Pensioners	Lopes Chaplain's Stipend Endowment	Robinson Trust	Patients Amenities	Sir John Howard Trust	Total
	£	£	£	£	£	£	£
ASSETS EMPLOYED							
Investments at cost	93,507	84,774	1,727	25,717	4,472	15,385	225,582
Current Asset		2,675			493		3,168
Cash at Bank and on Hand	93,507	87,449	1,727	25,717	4,965	15,385	228,750
FINANCED BY							
Balances on Funds at 1.10.80	93,457	84,276	1,727	25,717	4,965	15,385	225,527
Gain on sale or redemption of investments	48	498					546
Surplus (deficit) for year transferred	2	2,675					2,677
	93,507	87,449	1,727	25,717	4,965	15,385	228,750
INCOME							
Investment Income	7,984	10,807	150	4,515	388	1,870	25,714
— Transferred to General Fund	(7,982)		(150)	(4,515)	388	(1,870)	(14,517)
	2	10,807					11,197
EXPENDITURE							
Miscellaneous expenses		567			388		955
Pensions and Grants to Patients living at home		7,565					7,565
		8,132			388		8,520
Surplus (deficit) for year transferred	2	2,675					2,677

CODICIL FOR EXISTING WILL

There have been many changes in Personal Estate Duty and you might care to add a Codicil to your existing Will so that the Royal Hospital and Home for Incurables can benefit without affecting the other beneficiaries.

Through your help we will be able to further our aim of the well-being, independence, and medical care for severely disabled people. Please consult your Solicitor (or we will be happy to do this for you) and consider this typical Codicil.

I of
..... a
HEREBY DECLARE this to be the Codicil to my Will which bears date the day of One thousand nine hundred and

1. **I GIVE** to the Royal Hospital and Home for Incurables, (Putney and Brighton), West Hill, Putney, London, S.W.15. the sum of (in words) (£) free of duty **AND I DECLARE** that the receipt of the Treasurer or Secretary for the time being shall be a good and sufficient discharge for the same.

2. **IN** all other respects **I CONFIRM** my said Will.
IN WITNESS whereof I have hereunto set my hand this day of One thousand nine hundred and

SIGNED by the said as the)
..... Codicil to his/her Will which bears date the)
day of 19 in the presence of us both together)
who at his/her request in his/her presence and in the presence)
of each other have hereunto subscribed our names as)
witnesses.

Signature of First Witness Signature of Second Witness
Address Address
Occupation Occupation

Legacy

"I give to the ROYAL HOSPITAL AND HOME FOR INCURABLES, WEST HILL, PUTNEY, LONDON SW15 3SW the sum of £ free of duty. And I direct that the receipt of the Treasurer or Secretary for the time being shall be a good and sufficient discharge to my Executors."

Residue

"I give all my property not otherwise disposed of by this my Will subject to and after payment of my funeral and testamentary expenses to the ROYAL HOSPITAL AND HOME FOR INCURABLES, WEST HILL, PUTNEY, LONDON SW15 3SW. And I direct etc. (as above)."



John Howard House, our 30 bed hospital annexe at Brighton

Note: At present the law allows gifts of up to £200,000 to charities free of tax.