



Royal Hospital for Neuro-disability

Royal Hospital for Neuro-disability Archive Service :
Digital copy

ROYAL HOSPITAL FOR NEURO-DISABILITY:
Administration: Governance records:
Annual reports

Annual report, 1938

Ref No : GB 3544 RHN-AD-1-9

THE ROYAL HOSPITAL AND HOME FOR INCURABLES, PUTNEY.

(Incorporated by Royal Charter.)

Instituted in the year 1854.



Offices
42, GRACECHURCH STREET, E.C.3.

REPORT

For Year ended 30th September, 1938.

The Institution is intended for the middle classes.

Telegraphic Address : "INCURIAL," BILGATE, LONDON.

Telephone : Mansion House 7436.

**INQUIRIES ARE INVITED FROM INTENDING
SUBSCRIBERS.**

PATRONS.
 HIS MAJESTY KING GEORGE VI.
 HER MAJESTY THE QUEEN.
 HER MAJESTY QUEEN MARY.

PRESIDENT.
 THE RIGHT HON. THE VISCOUNT LEE OF FAREHAM,
 P.C., G.C.B., G.C.S.I.

VICE-PRESIDENTS.
 HIS GRACE THE DUKE OF PORTLAND, K.G.
 SIR GEORGE WYATT TRUSCOTT, Bt., A.L.D.
 C. F. DENNY, Esq.
 THE MOST HON. THE MARQUESS OF NORTHAMPTON.
 THE RIGHT HON. THE VISCOUNT ULLSWATER, P.C., G.C.B.
 SIR JEREMIAH COLMAN, Bt.
 ALBERTHA, LADY ROBOROUGH
 MAJOR SIR WILLIAM PRESOTT, C.B.E., D.L., J.P.
 SIR PERCY GREENAWAY, Bt.
 Mrs. ROY F. TRUSCOTT.
 SIR PERCY VINCENT, Bt.
 SIR COURTAULD THOMSON, K.B.E., C.B.
 SIR HARRY TWYFORD, K.B.E.

CHAIRMAN.
 SIR EDWARD MACLAGAN, K.C.S.I., K.C.I.R.

TREASURER.
 LORD ROBOROUGH.

SECRETARY.
 CAPTAIN B. D. ARMSTRONG, 42, Gracechurch Street, E.C.3.

CONSULTING PHYSICIANS.
 SIR E. FARQUHAR RUZZARD, Bt., K.C.V.O., M.D., F.R.C.P.
 D. E. DENNY-BROWN, Esq., F.R.C.P.
 ARTHUR H. DOUTHWAITE, Esq., M.D.
 GEOFFREY DUCKWORTH, Esq., M.R.C.P.

CONSULTING SURGEON.
 C. MAX PAGE, Esq., D.S.O., M.S., F.R.C.S.

CONSULTING OPHTHALMIC SURGEON.
 GERARD G. PENMAN, Esq., M.D., F.R.C.S.

MEDICAL OFFICER TO THE ESTABLISHMENT
 W. B. WINTON, Esq., M.D., B.Ch., M.R.C.P.

SURGEON-DENTIST.
 GERALD AGNEW, Esq., L.D.S., F.P.S.

CHAPLAIN.
 REV. DIGBY GRITTEN, M.A.

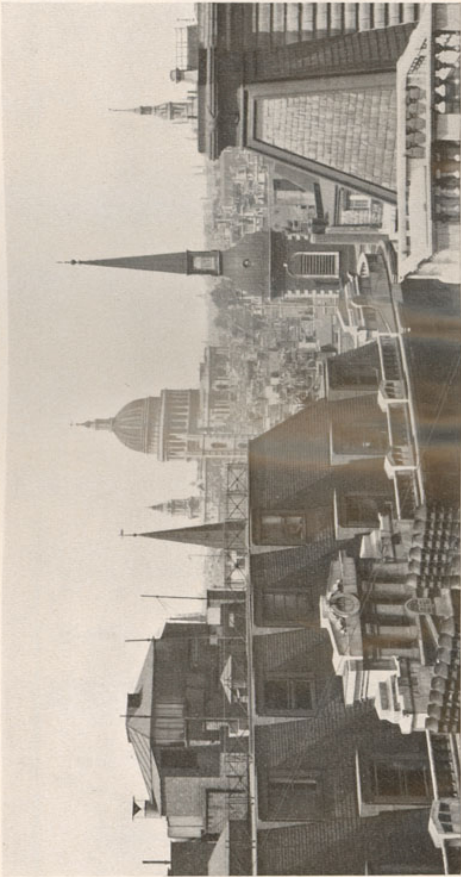
BANKERS
 MESSRS. GLYN, MILLS & Co., 67, Lombard Street, E.C. 3.

SOLICITORS.
 MESSRS. FARKER & Co., 66, Lincoln's Inn Fields, W.C. 2.

AUDITORS.
 MESSRS. HELMORE, HELMORE & CO.,
 Chartered Accountants, 3, Grosvenor Gardens, S.W.1.

CONSULTING ENGINEER.
 COLONEL MAURICE BLAND, O.B.E., M.INST.C.E., A.M.I.E.E.,
 5, Laurence Pountney Hill, E.C. 4.

STEWARD.
 Mr. H. A. CLARIDGE.



VIEW FROM OUR OFFICE SHOWING ST. PAUL'S CATHEDRAL.

BOARD OF MANAGEMENT.

THE RIGHT HON. THE VISCOUNT LEE OF FAREHAM,
P.C., G.C.B., G.C.S.I., *President.*

SIR EDWARD MACLAGAN, K.C.S.I., K.C.I.E., *Chairman.*

RICHARD S. SEYMOUR, Esq., M.V.O., *Deputy Chairman.*

LORD ROBOROUGH, *Treasurer.*

MRS. HENRY ARNOLD.	A. T. MAXWELL, Esq.
S. HENNING BELFRAGE, Esq., M.D.	M. F. NORTH, Esq.
MRS. WILSON BLACK.	MRS. WM. PENDARVES, O.B.E.
HOWARD T. CROSS, Esq.	COL. SIR JOHN PERRING, D.L., J.P., L.C.C.
GODFREY FOLJAMBE, Esq.	COL. G. F. PHILLIPS, C.B.E., D.S.O.
LEWIS FRENCH, Esq., C.I.E., C.B.E.	JOHN C. POTTER, Esq.
GEORGE W. HAYES, Esq.	SIR CLAUD RUSSELL, K.C.M.G.
EGERTON H. E. HENSLEY, Esq.	SIR H. PERCY SHEPHERD, C.C.
MRS. LEONARD HITCH.	MISS THORNE.
GERALD LENANTON, Esq.	DENIS H. TRUSCOTT, Esq., C.C.
T. G. MARRIOTT, Esq.	

HOUSE COMMITTEE.

MRS. HENRY ARNOLD.	M. F. NORTH, Esq.
S. HENNING BELFRAGE, Esq., M.D.	MRS. WM. PENDARVES, O.B.E.
MRS. WILSON BLACK.	COL. SIR JOHN PERRING, D.L., J.P., L.C.C.
GODFREY FOLJAMBE, Esq.	COL. G. F. PHILLIPS, C.B.E., D.S.O.
LEWIS FRENCH, Esq., C.I.E., C.B.E.	JOHN C. POTTER, Esq.
MRS. LEONARD HITCH.	LORD ROBOROUGH.
SIR EDWARD MACLAGAN, K.C.S.I., K.C.I.E.	RICHARD S. SEYMOUR, Esq., M.V.O.
T. G. MARRIOTT, Esq.	MISS THORNE.

FINANCE COMMITTEE.

S. HENNING BELFRAGE, Esq., M.D.	M. F. NORTH, Esq.
HOWARD T. CROSS, Esq.	MRS. WM. PENDARVES, O.B.E.
GODFREY FOLJAMBE, Esq.	COL. SIR JOHN PERRING, D.L., J.P., L.C.C.
LEWIS FRENCH, Esq., C.I.E., C.B.E.	COL. G. F. PHILLIPS, C.B.E., D.S.O.
EGERTON H. E. HENSLEY, Esq.	JOHN C. POTTER, Esq.
GERALD LENANTON, Esq.	LORD ROBOROUGH.
SIR EDWARD MACLAGAN, K.C.S.I., K.C.I.E.	RICHARD S. SEYMOUR, Esq., M.V.O.
T. G. MARRIOTT, Esq.	SIR H. PERCY SHEPHERD, C.C.
A. T. MAXWELL, Esq.	

MATRON.

MISS D. W. ROSIER, D.N. (Lond.).

TERMS OF SUBSCRIPTION.

An Annual Subscriber has One Vote at each Election for each Half Guinea, and an additional Vote for every additional Half Guinea. A Donation entitles to votes at the next ensuing Election only, four votes being given for each Guinea contributed. A Life Subscriber has One Vote for Life at each Election for Five Guineas, and an additional Vote for Life for every additional Five Guineas.

Subscriptions received at the Office, 42, Gracechurch Street, E.C.3, by the Secretary, to whom all Orders should be made payable; by the Treasurer, and by Messrs. GLYN, MILLS & Co., 67, Lombard Street, E.C.3.

In Memoriam.

WHY NOT COMMEMORATE THE PRECIOUS MEMORY OF THOSE DEAR TO YOU BY NAMING IN PERPETUITY A BED, OR A WARD, AT THE ROYAL HOSPITAL AND HOME FOR INCURABLES, PUTNEY, A MEANS WHICH WOULD NOT ONLY BE A LASTING TRIBUTE TO THE DEPARTED, BUT ALSO PROVIDE THE ADDITIONAL MERIT OF AFFORDING RELIEF TO THOSE WHO ARE WORTHY OBJECTS FOR SUCH PRACTICAL SYMPATHY. A BED WILL BE NAMED IN PERPETUITY FOR THE SUM OF £1,000. A PENSION OF £42 A YEAR FOR AN INCURABLE WILL BE NAMED IN PERPETUITY FOR THE SUM OF £1,000, OR A PENSION OF £20 A YEAR FOR THE SUM OF £500

There are two Elections a year, one on the last Friday in MAY and one on the last Friday in NOVEMBER. The List of applicants for nomination as candidates for the May Election closes on January 1st, and the List for the November Election closes on July 1st. *The Board can deal with only one Election at a time.* Friends who send in applications for nomination *after* the 1st of January must please understand that the papers are held over for the November Election; just as friends who send in applications for nomination *after* the 1st of July must understand that the papers are held over for the following Election in May. The enormous amount of work entailed by each Election renders a long time for preparation necessary.

It may surprise some readers to learn that The Royal Hospital and Home for Incurables, Putney, is denied a share in the annual distribution from the King Edward's Hospital Fund and the Saturday and Sunday Collections for the Hospitals. Not one penny from these Funds ever finds its way to this Charity. The main reason for this is that The Royal Hospital and Home for Incurables, Putney, does not cure patients, a task which it would naturally not pretend to undertake, since it only accepts cases which have already been discharged as incurable by other hospitals, or certified as incurable by two doctors. Surely, the fact that this hospital is denied a share in the distribution of these Funds lends added claim upon the generosity of the public?

The Royal Hospital and Home for Incurables, Putney.

REPORT

FOR THE

Financial year ended on the 30th day of September, 1938,

FOR

Presentation at the Annual General Meeting,
25th November, 1938.

ANNUAL REPORT.

"Tempus in agrorum cultu consumere dulce est," wrote Ovid—"Agriculture is a grand life"—but this year few farmers would be found to agree with him. 1938 has been a year of anxieties for all, not least for those responsible for the welfare of our voluntary hospitals; and now in presenting the eighty-fourth Annual Report the Board of Management would remind all our supporters that the economic conditions, which have caused so much anxiety to other hospitals, must be viewed with even greater concern by them. Not only is this Hospital denied any share of the distributions made by the King Edward's Hospital Fund for the reason that we are unable to cure the incurable, but also while it is possible—however undesirable it may be—for a ward in a general hospital to be closed until times improve, for us such a solution is impossible. It is our definite undertaking to afford a Home to our patients and financial help for the relief of our

Pensioners for the rest of their lives, and it is believed that those who know of this great and essential work will not allow any falling short of our commitments.

In particular, the Board would again draw especial attention to the great benefit which would accrue to the Hospital if our Annual Subscribers would agree to enter into a covenant to continue their subscriptions at their present or increased rates for a period of seven years. Under such a covenant, with the present rate of Income Tax, the Hospital would be enabled to reclaim from the Inland Revenue a sum of 7s. 11d. on each guinea subscribed, without affecting in any way the subscriber's personal Income Tax liabilities, provided that the full rate of Income Tax is already being paid. Thus, for each annual subscription of one guinea paid under a seven years' covenant, the Hospital would actually receive £1 8s. 11d. A copy of the Form of Covenant will be found in the centre of this Report, and a full explanation of this Scheme will be gladly sent in answer to an enquiry.

The Board again earnestly solicit the co-operation of its supporters in some or all of the ways suggested on pages 25 and 26 of this Report, to which attention is particularly invited.

In April last the Board had the misfortune to lose, within three days of each other, two prominent Members, to whom and to whose families the Hospital owes a special debt of gratitude.

Deaths of two
Members of
the Board.

One of them was our Honorary Treasurer, Sir Henry Lopes, recently created Lord Roborough, who had been a member of the Board since 1908. His father, Sir Massey Lopes, who died in 1908, had been a member before him and had, in addition to many other kindnesses, been responsible for the munificent contribution of £5,000 to the Hospital Chaplain's Endowment Fund. A ward in the Hospital was endowed in memory of Sir Massey Lopes' wife, and his son, Lord Roborough, maintained the greatest interest in the welfare of our Institution. In his home county of Devon he was a respected and influential leader, and was much occupied in many departments of activity, but on his visits to London, however short, he seldom failed to attend some Hospital meeting and to help us with his counsel. On his death a Commemoration Service was held, at the request of the family, in the Hospital itself, which was attended by a number of his friends and by not a few patients who had happy memories both of himself and (in some instances) of his father before him.

The other member whom we have lost is Colonel Roy Truscott. He joined our Board in 1924, and was a most conscientious attendant at its meetings until overtaken by ill-health in 1934. His genial personality and kindly temperament endeared him to his colleagues, by whom his loss is deeply deplored. Himself a member of the Court of Common Council of the City of London, and a nephew of Sir George Wyatt Truscott, an ex-Lord Mayor, he did much to

keep up the historical connection of our Hospital with the City. He was the second member of his family to be actively associated with the work of the Hospital.

**New
Members of
the Board.**

It is with peculiar pleasure that we have been able to welcome one of the younger generation of each of these families to our Board.

In May last the present Lord Roborough accepted the office of Treasurer, and thus continues unbroken the long association of his family with the management of the Hospital. Lord Roborough played No. 1 in the Regimental Polo team of The Royal Scots Greys, and was largely instrumental in their success in winning the Inter-Regimental Championship Cup this year. He has recently retired from the Army in order to devote himself to the many duties which have now fallen on his shoulders, in which we wish him every happiness and success. Lord and Lady Roborough have already made themselves known to many of our patients, in whom their ready kindness and sympathy have evoked a warm response.

In August Mr. Denis Truscott was unanimously elected to the Board of Management. He is a cousin of the late Colonel Roy Truscott and nephew of Sir George Wyatt Truscott, and is the third of his family to become a member of our Board. An old Rugbeian, on leaving Cambridge he joined the family firm of James Truscott & Son, Ltd., of which he is a Director. He has recently been elected to the



VIEW FROM SECRETARY'S OFFICE SHOWING ST. DUNSTON'S CHURCH, TOWER BRIDGE AND THE MONUMENT.

Court of Common Council, and thus continues the family tradition of public work in the City. He has for some years helped in the entertainment of our bedridden patients on "Founder's Night" by the organisation of an orchestral party to play music in the corridors of our Home.

The details of comparative revenue for the years **Finance.** 1937 and 1938 published below, show that in spite of the increased sum received from dividends there is a slight decrease in the total Ordinary Income. What is of deeper concern is to note that the amounts received under the headings of Life Subscriptions and Donations have fallen by nearly £1,000. This accentuates our need for an extension in the list of our regular supporters, and we earnestly solicit your co-operation in making the work of this Hospital known to your friends, to whom we will gladly send full particulars on application to the Secretary.

Though Legacies show a very welcome increase, they form a most precarious item on which to budget, and it is earnestly hoped that increasing numbers of our friends—including those who are unable at present to give financial support—will make our Hospital a beneficiary under their wills. Though part of our yearly total of legacies must be spent in making good the excess of Expenditure over Ordinary Income, we are able each year to invest the balance remaining and so to increase our "endowment" income, which is our only assured item of revenue.

	1937.		1938.	
	£	s. d.	£	s. d.
Annual Subscriptions ...	8,017	18 2	8,141	19 8
Life Subscriptions ...	10,176	9 10	9,907	1 0
Donations ...	4,436	12 4	3,707	1 2
Interest and Dividends ...	15,511	0 10	16,180	3 6
Sundry Collections ...	333	7 11	470	6 6
Total Ordinary Income ...	38,475	9 1	38,406	11 10
Legacies ...	32,087	9 1	41,865	8 4
Gifts to Found New Pensions...	1,200	0 0	450	0 0
	£71,762	18 2	£80,722	0 2

**Festival
Dinner.**

Our Annual Festival Dinner was held on 13th June, at the Grocers' Hall, which, by the kindness of the Master and Court of the Worshipful Company of Grocers, was again made available for our use for this occasion.

The Lord Mayor, Sir Harry Twyford, presided, and announced from the Chair that as a result of our President's appeal in connection with the Dinner, the sum of £4,373 had been subscribed including £237 given at the table in response to Mr. Geoffrey Gilbey's eloquent and moving speech when proposing the toast of "The Royal Hospital and Home for Incurables, Putney."

Some extracts from the speeches are quoted below:—

"Many of you here know the Royal Home for Incurables intimately, and every one of you, I know, will agree that there are no words in the dictionary which can do justice to the perfectly marvellous work which the Home is doing."

(MR. GEOFFREY GILBEY.)

"Now, in my life I have heard many sermons, but no sermon has ever impressed me more than the sermons which the men and women are unconsciously preaching every day of their lives at the Home for Incurables at Putney. I used to go and see Mr. Walker frequently, and I am eternally grateful to him for introducing me into the one place in the world where I can always find inspiration, peace and comfort."

(MR. GEOFFREY GILBEY.)

"The outstanding characteristic of this Home is that it is a home. Some husbands might think it is more than a home when I say that there are really no restrictions at all."

(MR. GEOFFREY GILBEY.)

"The food, too, is splendid, and the variety and the choice that the patients have quite astounded me. But there is another reason why the organisation is so good, and that is that not one penny is wasted. That is the truth."

(MR. GEOFFREY GILBEY.)

"I want to remind you that although I am using the word 'charity,' those who benefit from it are not made to feel that they live on charity. They know they are being given comfort and happiness by men and women like you here to-night who, I feel sure, long to share what you have with them."

(MR. GEOFFREY GILBEY.)

"During the last thirty years, at a conservative estimate, the number of people in this country with medium and large incomes has increased by over fifty per cent. In the same period the number of regular annual subscribers to our Hospital has been reduced by more than twenty-five per cent. It is more than 200 years now since Pope wrote: 'In faith and hope the world will disagree, But all mankind's concern is charity.' I wonder if that is quite as true to-day."

(MR. GERALD LENANTON.)

"A few weeks ago I heard somebody say about our Hospital when he heard that we could not twist ropes of sand or cure the incurable, 'I call that 'a Home. That is not my idea of a hospital.' I cannot help remembering an old friend of mine, now dead, a professor of Oxford University, who was walking through the woods near Oxford one day with an undergraduate. The undergraduate suddenly said to him, 'What is that bird?' 'That,' said my friend, 'is a woodcock.' The undergraduate said, 'Oh! that's not my idea of a woodcock.' The professor looked at him sadly and said, 'No, but 'it is God's idea of a woodcock.' So I hope that the next time you hear somebody say, 'That's not my 'idea of a hospital,' you will please tell them that 'it is God's idea of a hospital.'"

(MR. GERALD LENANTON.)

"I am sure that this Hospital is one of the most deserving charities in the country, and I assure you that it has been a great pleasure to me to preside to-night."

(SIR HARRY TWYFORD, Lord Mayor.)

Apart from the treatment of incidental complaints such as infections, from which the patients are carefully protected, the work chiefly consists of the relief of symptoms and the provision of comfort as far as is possible considering the nature of the complaints for which they have been admitted.

No effort is spared to provide the most up-to-date apparatus for treatment by various forms of electricity, by light and by heat, with gratifying results in a large number of cases; a special staff, skilled in massage and electrotherapeutics, always has many patients in its hands.

Medical
Officer's
Report.

The same applies to drug treatment; the latest lines of treatment and the most recent drugs being used as far as circumstances will allow.

On March 31st the Hospital lost the valued services of Dr. Geoffrey Duckworth, who had been Medical Officer of the Institution for three-and-a-half years, and to whom the Hospital is greatly indebted for the skill and sympathy shown by him during the period of his employment. As he has been appointed a Consulting Physician to the Hospital, we shall still maintain the pleasing connection established by him with our Institution. He has been succeeded as Medical Officer by Dr. W. B. Winton.

This Report is of work done and Services taken from October, 1937, to March 11th, 1938, when an unfortunate accident necessitated the removal of the Chaplain, the Rev. D. Gritten, to Putney Hospital.

The
Chaplain's
Report.

In the time referred to above, 885 visits were paid to the patients confined to their wards, to whom also the Communion was administered whenever requested. Occasionally patients are removed to other hospitals for special treatment or observation: these also were visited by the Chaplain.

A special feature is the Bible Class, held on Mondays during the winter months in the Assembly Room, from 2 to 3 p.m. To these classes special speakers are invited, many of them suggested by the patients themselves, who are thus given the opportunity of getting into touch again with the

clergyman or minister of their old parish. The success of this class is evidenced when the attendances show an average of seventy.

The Holy Communion has been administered in the Hospital on alternate Sundays, and the staff have a Communion Service in the adjoining Church of Holy Trinity, at 6.30 a.m. on the fourth Sunday in each month.

The Chaplain expresses his thanks to the Board of Management, and to all those who have associated themselves with him in the spiritual side of our Hospital Home, of which a very pleasing feature has been, once again, the whole-hearted co-operation of the patients themselves.

After March 11th the current duties of the Chaplain were kindly undertaken by various clergymen, until June 1st, when the Rev. G. Herbert Davis was appointed to hold the post of Chaplain until Mr. Gritten's recovery from illness. We are pleased to say that Mr. Gritten was able to resume his duties at the Hospital on the 4th September.

Sale of Patients' Work.

The Annual Sale of Patients' Work was held at the Hospital on the 18th and 19th May, and our grateful thanks are due to the Duchess of Marlborough and Mrs. Julia Neilson-Terry who opened it on the first and second days, respectively, and who were received by Mr. Richard Seymour, M.V.O., the Deputy Chairman of the Board of Management.

Important Notice to Annual Subscribers of One Guinea and Upwards

**BY COMPLETING THE ATTACHED FORM YOU
INCREASE THE VALUE OF YOUR SUBSCRIPTION**

and the Hospital will benefit to the extent of

7/11 in respect of each Guinea

of your Annual Subscription

The following table shows the increased value to the Hospital of Subscriptions of from One to Ten Guineas after completion of the seven-year agreements and with Income Tax at 5/6 in the £.

Annual Subscription	Income Tax recoverable by Hospital	Subscriptions shewn in Hospital Accounts
£ 1 1 0	£ 7 11	£ 1 8 11
£ 5 5 0	£1 19 9	£ 7 4 9
£10 10 0	£3 19 7	£14 9 7

The Income of the Hospital from Subscriptions would be considerably increased if all our Subscribers used the form overleaf.

Our thanks are also due to Lieut.-Colonel N. M. Ritchie, D.S.O., M.C., and the Officers of the 2nd Battalion The King's Own Royal Regiment, for kindly sending their Band, which is well known to listeners to the B.B.C. programmes, to play music in the grounds on the first day of the Sale. No charge was made for the services of this Band, or for the services of the Band of the Royal Merchant Navy School, again so kindly provided, by permission of the Board of Management of that Institution, on the second day of the Sale.

The Hon. Treasurer, Mrs. Robinson, who was again kindly assisted by Mr. Groombridge as accountant, was able to announce a still better result than last year, the total takings having reached the sum of £639.

About 70 per cent. of the articles for sale were the unaided work of our patients, and we tender our warm thanks and congratulations to Mrs. Satchell, the indefatigable Secretary of the Sale of Work Committee, and all who helped her to procure the very successful result mentioned above.

It may perhaps not be universally known to subscribers that the whole proceeds of this Sale are distributed among our patients to enable them to purchase any little extra personal comforts they may require. Their increasing patronage of the Sale would therefore be warmly welcomed.

Change of
Office
Quarters.

Like several other Charities, we have always found it convenient to have our Head Offices in the City, and for many years past our friends have found us ensconced in a set of somewhat dismal rooms in Bond Court, near the Mansion House. The lease of these rooms expired in March last, and we have now migrated to Gracechurch Street, near the Monument (and incidentally near Billingsgate!). In this street (which our forefathers knew by the kindly name of Gracious Street) we occupy a pleasant set of quarters, accessible by two passenger lifts, on the top or eighth floor. Photographs of some of the views over London taken from these Offices are reproduced in this Report, and it is a matter of some interest to find that on a clear day the position of our Office can be seen from the Hospital and *vice versa*, although the distance between them is six miles as the crow flies. Dwelling-houses were still common in Gracechurch Street a century ago, but they were not of the fashionable type, and readers of "Pride and Prejudice" will recollect how the supercilious hero, though he "might perhaps have *heard* of such a place as Gracechurch Street, would hardly think a month's ablution enough to cleanse him from its impurities." It is now, needless to say, one of the most distinguished and best known centres for City offices, and we hope for a long and prosperous term of occupation in our new quarters there.

Diversions
provided by
friends of the
Hospital.

A very pleasing feature of life at our Hospital—one that is so unailing that we almost take it for granted—is the constant kindness of friends and neighbours in arranging diversion and relaxation

for the patients. The Hospital itself some years ago installed the wireless; and a sound-film is shown once a week during the winter. There is a popular entertainment on Founder's night, and at Christmas-time quite a round of festivities. One of the Members of the Board has for some years past given an Annual Smoking Concert for the men, and another has provided the patients with an annual exhibition of conjuring. But quite apart from such diversions as these there is an unremitting stream of good offices for which we are indebted to outside friends and well-wishers of the Hospital, including our much-valued Authorised Lady Visitors. Some of these will come and read or talk to the patients; others will play chess and billiards with them; others bring fruit and flowers. Many will take patients in chairs for fresh air and picnics on Putney Heath or elsewhere, or if living near will arrange for visits to their homes. Some of our friends will provide for large tea-parties in the Hospital rooms or grounds, diversified sometimes by whist drives and bridge. Others are good enough to invite bodies of patients to their own houses or grounds for tea; and parties on the river have not been unknown. Those who own cars will take one or more patients with them for drives, and some of these drives—which are greatly appreciated—cover a good deal of ground. For these and many other tokens of good will we are greatly indebted to the friends of our Hospital, and we are most grateful for the help they give us in trying to introduce variety and cheerfulness into lives which otherwise must be

monotonous. Their noble example has not been lost on the authorities, and this year the Hospital has for the first time set aside a sum of money to be used in providing motor drives for some of the patients who otherwise would not participate in them.

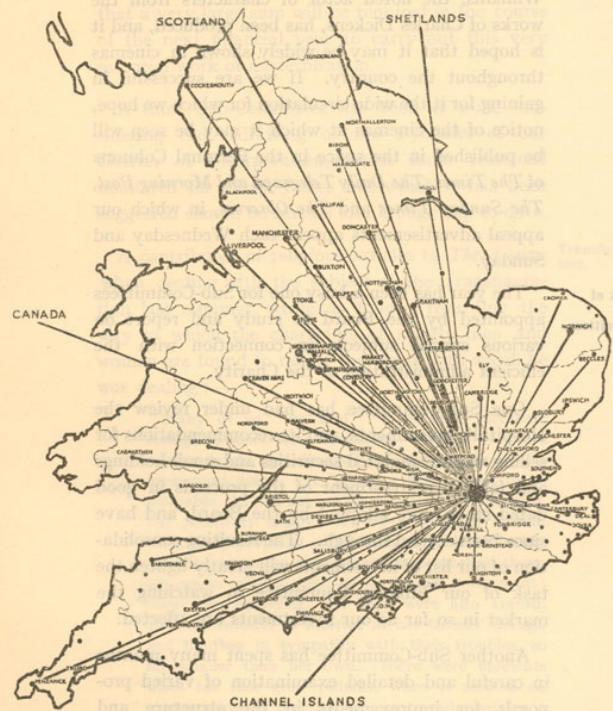
One of our present patients is Mr. David Devant, who was in former days the partner of Mr. Maskelyne in the conjuring entertainments, so well known to a previous generation; and perhaps the most enjoyable diversion which our patients had this year was one which was kindly provided by some of Mr. Devant's old friends in honour of his seventieth birthday—a display of magic such as few persons inside or outside the Hospital have ever had the privilege of seeing, and one for which we are indebted to the affection in which Mr. Devant is held by his brother experts.

It is not always realised how many of the beneficiaries of our Charity have come from or reside at homes far beyond the limits of Greater London and the Home Counties. The map reproduced to face this page may help to convey an idea of the wide distribution of those poor invalids whom we exist to serve. We are proud to draw attention to the national scope of this great work.

A "talkie" film, showing the origin of our Foundation, various aspects of our work for incurable invalids at the Hospital, and culminating with an appeal for public support, spoken by Mr. Bransby

National Distribution of Patients and Pensioners.

Appeal Film.



MAP SHOWING DISTRIBUTION OF THE HOMES OF PATIENTS AND PENSIONERS OF THE ROYAL HOSPITAL AND HOME FOR INCURABLES, PUTNEY.

Williams, the noted actor of characters from the works of Charles Dickens, has been produced, and it is hoped that it may be widely shown in cinemas throughout the country. If we are successful in gaining for it the wide circulation for which we hope, notice of the cinemas at which it may be seen will be published in the space in the Personal Columns of *The Times*, *The Daily Telegraph and Morning Post*, *The Sunday Times* and *The Observer*, in which our appeal advertisements appear each Wednesday and Sunday.

Work of
Sub-
Committees.

The year has been a busy one for Sub-Committees appointed by the Board to study and report on various special subjects in connection with the efficient administration of the Charity.

One Sub-Committee has had under review the Hospital's investments, and its recommendations for selling various undated securities and small holdings and for the reinvestment of the proceeds in good dated stock were adopted by the Board, and have since been carried through. The resulting consolidation of our list of investments will greatly lighten the task of our Finance Committee in watching the market in so far as our investments are affected.

Another Sub-Committee has spent many months in careful and detailed examination of varied proposals for improvements in the structure and equipment of the Hospital, in order to bring it into line with modern requirements and for the added comfort of our patients. Their report is now under the consideration of the Board, and it is evident

that a very large sum will be required in the course of the next financial year to carry out this very essential work of modernisation.

A third Sub-Committee has been at work considering the redrafting of the Bye-laws of our Charter of Incorporation, which have remained unaltered for many years, and which it has been suggested should be revised and brought up to date.

A contributor of religious articles to *The Times*, when dealing with the subject of the Transfiguration last summer, wrote as follows regarding the way in which the characters of saintly men and women are found to reflect the event with which he was dealing :—

Transfiguration.

"Many of us," he said, "have been fortunate enough to meet some examples. Possibly it was a woman in old age, disabled by infirmity, in almost continuous pain. Yet, knowing her ailment to be incurable, she was not merely resigned or courageous, but positively happy; far more cheerful, indeed, than many people in perfect health. Of her bodily troubles, when she was compelled to mention them, she spoke with a kind of humorous resentment; they were annoying, but they were also absurd. She was brimful of interest in her friends' doings, and limitless in sympathy with their troubles, so far smaller than her own. There were moments when her face grew radiant, when it seemed no exaggeration to describe her as transfigured by a supernatural power. It became a commonplace to speak of her as 'marvellous,' but her serenity was no marvel to herself; quite humbly and simply she attributed it to her sense of God's nearness."

We have patients in our Hospital like that.

Kind words
from our
Post-bag.

The following extracts from letters received during the past year will be of interest to our Subscribers:—

"Will you please permit me to express the deep gratitude I feel in respect to the sweet, sympathetic and efficient treatment my sister is receiving, and I know that the two hundred or more other patients are all treated in the same splendid manner. What a blessing the Hospital and Home is to the many afflicted that have been fortunate enough to find refuge there."

"On behalf of my sister and for myself we send our heartfelt thanks to you and your staff for all the kindness and trouble you have bestowed on my sister ——. That kindness and attention has never slackened."

"I am writing to express my sincere gratitude to the Home for all that has been done to make my dear sister's sad life a little happier. All her nurses were unflinchingly sweet and tender with her, and I would like to thank you all for nursing her so kindly."

"I do so appreciate the kindness I receive at the Home, and am looking forward to see you all again and also to sleep once again in my warm, comfy bed. I am beginning to feel quite excited about coming back."

"Now that — has passed away we would like to express our gratitude for the great kindness and consideration that was shown him at the Royal Home at Putney by everyone. He was always very appreciative of the efforts made to ease his sufferings."

"We both feel that we must tender our sincerest thanks to you and the Committee of the Home for the very kind interest you have taken in our son through his recent illness, and the care which you have taken to give him every facility which might contribute towards his recovery. Assuring you of our sincerest gratitude . . ."

Each passing year takes many of our subscribers away from us, and this necessitates a constant search for new subscribers to maintain the income needed for our work. Subscribers would be doing a very valuable service could they add to the supporters of the Hospital by explaining its work to their friends, or by passing on to them this copy of the Annual Report, and the enclosed Appeal Leaflet.

To maintain—still more to increase—the success of any Charity depending for its existence on voluntary contributions is not, even in the most favourable times, an easy task. Under present economic conditions, with increasing taxation and a rising cost of living, constant and increasing endeavour is necessary. Will you, therefore, consider how each one of you, to whom our work for suffering chronic invalids makes its own well-proven appeal, can best take your share in the efforts of the Board to extend the list of our regular supporters and the number of those who wish to perpetuate their interest in the Hospital by making it a beneficiary under their wills. We most earnestly appeal to you for your personal help in this direction.

The Board would also invite your consideration of some of the following ways by which the funds of the Charity may be maintained:—

1. A lasting tribute to the memory of some dear friend or relative may most suitably take the form of naming in perpetuity either a Ward, or a bed, or a pension. Any enquiry will receive the prompt and grateful attention of our Secretary.

2. Annual Subscriptions, if paid under a seven years' covenant, would increase our income under this heading by over one-third. This has already been explained on page 8 of this Report, but its importance cannot be too clearly stressed.
3. The younger generation of our supporters can give scope to their energies by organising charitable entertainments in aid of our funds, in their own particular localities, thereby giving us a twofold benefit both through the sum of money they are able to raise by such means and by the publicity given to the needs of the Hospital.

We cannot expect help from those who do not know of our work and of our need, but just as the scope of our Charity embraces the entire Kingdom, so is it hoped that, through your help, knowledge of it may become equally widespread.

Signed by Order of the Board,

B. D. ARMSTRONG,

Secretary.

25th November, 1938.

ROYAL HOSPITAL AND HOME FOR INCURABLES, PUTNEY.

SPECIAL APPEAL

It was in the year 1850 that Charles Dickens, writing in "Household Words" first drew attention to the pressing need for hospitals "for the reception of persons past cure." This article led to the foundation of our Hospital two years later, and this great work for the relief of suffering and helpless incurable invalids has now been in progress for eighty-six years.



VIEW FROM THE CITY OFFICE SHOWING THE PORT OF LONDON AUTHORITY BUILDING AND THE TOWER OF LONDON.

ROYAL HOSPITAL AND HOME FOR INCURABLES,
PUTNEY.

SPECIAL APPEAL

It was in the year 1850 that Charles Dickens, writing in "Household Words" first drew attention to the pressing need for hospitals "for the reception of persons past cure." This article led to the foundation of our Hospital two years later, and this great work for the relief of suffering and helpless incurable invalids has now been in progress for eighty-six years.

There are to-day at Putney 250 in-patients to whom a home and the relief given by skilled medical treatment and devoted nursing are afforded free of cost for the remainder of their lives. We have no paying patients.

In addition to those in our Hospital, over 600 incurable invalids are given a pension for life to enable them to procure relief in their own little homes in all parts of the kingdom, and so to save them untold misery.

The maintenance of these benefits requires over £55,000 a year, of which our assured income amounts only to £15,000, leaving over £40,000 to be raised by voluntary contributions in each and every year. This is indeed a formidable task and only made possible by a constant endeavour to find new subscribers and to widen the circle of our well-wishers; but now to the anxieties of the Board of Management is added the pressing need of carrying out during the next financial year various necessary improvements in the structure and equipment of the Hospital, in order to bring it into line with modern requirements and for the comfort of our patients.

A Sub-Committee appointed by the Board has for the past twelve months been studying every means by which the utmost economy should be observed in the preparation of the draft plans for the carrying out of this work, and their recommendations have been allowed to include only such details as are considered indispensable. These recommendations are now before the Board of Management for a further detailed examination, but it is already obvious that a sum of well over £15,000 will be required to give effect to the necessary alterations.

We earnestly appeal for your support and assistance in raising the funds necessary to meet the additional expenditure which must be faced during this next year.

Remittance Form.

To CAPTAIN B. D. ARMSTRONG, *Secretary*, Date _____ 193__
ROYAL HOSPITAL AND HOME FOR INCURABLES, PUTNEY,
42, GRACECHURCH STREET, E.C.3.

From* _____

Address _____

Sir,

Enclosed you will find a _____ for £ _____

which _____ send you as †

}	an Annual Subscription
	a Donation
	a Life Subscription

 in aid of the funds of the

ROYAL HOSPITAL AND HOME FOR INCURABLES, PUTNEY.

(Signed) _____

AN ANNUAL SUBSCRIBER has one Vote at each Election for each Half-Guinea
A DONATION entitles to Votes at the next ensuing Election only, Four Votes being given for each Guinea contributed
A LIFE SUBSCRIBER has One Vote for Life at each Election for Five Guineas, and an additional Vote for Life for every additional Five Guineas.

* Please write name as it should be printed in the List of Governors and Donors.
† Kindly strike out the words not applicable.

CHEQUES TO BE CROSSED "Messrs. GLYN, MILLS & CO."

Inquiries are invited from Intending Subscribers.

2. Annual Su
years' cov
under this
has already
Report, b
clearly str
3. The young
give scope
charitable
in their c
giving us a
sum of me
means and
of the Hos

We cannot e
not know of our v
scope of our Char
is it hoped that,
it may become e
Signed

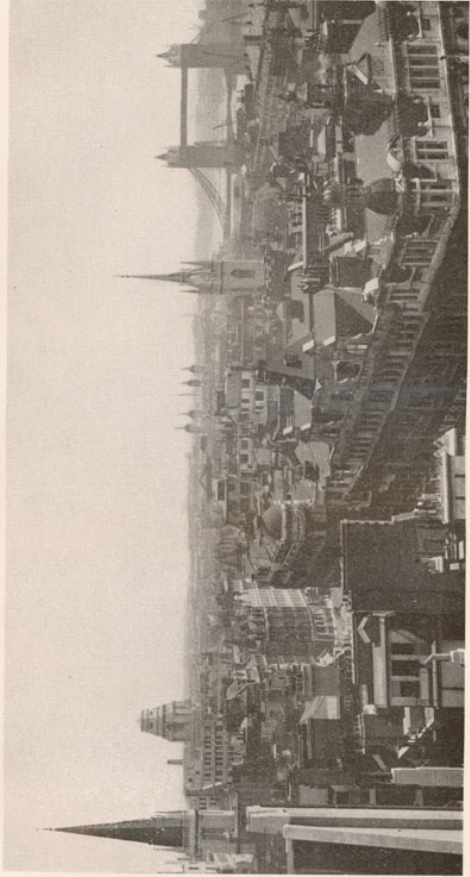
25th November, 1

There are to-day at Putney 250 in-patients to whom a home and the relief given by skilled medical treatment and devoted nursing are afforded free of cost for the remainder of their lives. We have no paying patients.

In addition to those in our Hospital, over 600 incurable invalids are given a pension for life to enable them to procure relief in their own little homes in all parts of the kingdom, and so to save them untold misery.

The maintenance of these benefits requires over £55,000 a year, of which our assured income amounts only to £15,000, leaving over £40,000 to be raised by voluntary contributions in each and every year. This is indeed a formidable task and only made possible by a constant endeavour to find new subscribers and to widen the circle of our well-wishers; but now to the anxieties of the Board of Management is added the pressing need of carrying out during the next financial year various necessary improvements in the structure and equipment of the Hospital, in order to bring it into line with modern requirements and for the comfort of our patients.

A Sub-Committee appointed by the Board has for the past twelve months been studying



VIEW FROM THE CITY OFFICE SHOWING THE PORT OF LONDON AUTHORITY BUILDING AND THE TOWER OF LONDON.

RECEIPTS AND
for the Year ended

	£	s.	d.	£	s.	d.
Annual Subscriptions	8,141	19	8			
Life Subscriptions	9,907	1	0			
Donations	3,707	1	2			
Sundry Collections	470	6	6			
				22,226	8	4
Interest and Dividends	13,311	13	8			
Beynon Trust Income	296	12	2			
Brodie-Sewell Trust Income	220	0	0			
Louisa Lucas Trust Income	120	0	0			
Lopes Chaplain Fund Income	110	12	6			
				14,058	18	4
Income Tax Refund				2,121	5	2
Excess of Expenditure over Ordinary Income				18,330	3	9
				<u>£56,736</u>	<u>15</u>	<u>7</u>

We have examined the Receipts and Payments Account for the vouchers relating thereto, and certify same to be correct in accordance

18th October, 1938.

PAYMENTS ACCOUNT
30th September, 1938.

	£	s.	d.	£	s.	d.
HOSPITAL ACCOUNT :						
Provisions	8,460	4	9			
Surgery and Dispensary	1,172	13	0			
Domestic	6,825	12	1			
Establishment Charges	3,078	3	3			
Salaries, Wages, etc.	14,086	4	9			
Miscellaneous	1,027	10	6			
Extensions and Renewals	1,452	10	5			
				36,103	4	9
PENSIONS ACCOUNT :						
General	12,230	11	11			
Brodie-Sewell Trust	220	0	0			
Louisa Lucas Trust	120	0	0			
				12,570	11	11
Publicity				2,536	3	2
Administration Expenses				5,174	15	6
Removal to new offices and making good deteriorations under lease of old offices ...				352	0	3
				<u>£56,736</u>	<u>15</u>	<u>7</u>

We have examined the Payments Account for the vouchers relating thereto, and certify same to be correct in accordance with the books and therewith.

(Signed) HELMORE, HELMORE & Co.,
Chartered Accountants,
3, Grosvenor Gardens, S.W. 1.

CAPITAL
for the Year ended

	£	s.	d.
Cash balance brought forward	751	13	6
Investments held on 30th September, 1937 (Market value at this date: £427,661 2s. 6d.)	436,756	5	5
Legacies	41,865	8	4
Gifts to found new Pensions	450	0	0
Profit on sale of Investments	10,506	11	4
Sale of freehold and leasehold properties	2,362	18	6
	<u>492,692</u>	<u>17</u>	<u>1</u>

NOTE.—No credit has been taken in the Investments for the value of the Hospital premises and land, the Nurses' Home, and furniture and effects.

We have examined the Capital Account for the year ended 30th thereto, and certify same to be correct in accordance therewith. We have

18th October, 1938.

HELMORE, HELMORE & CO.,
Chartered Accountants,
3, Grosvenor Gardens, S.W.1.

ACCOUNT

30th September, 1938.

	£	s.	d.
Overdraft brought forward	852	19	3
Excess of Expenditure over Ordinary Income	18,330	3	9
Investments held on 30th September, 1938 (Market value at this date: £442,147 14s. 8d.)	471,145	13	8
Cash balances	2,364	0	5

September, 1938 (as above set forth), with the books and vouchers relating also verified the whole of the Securities and Bank Balances.

(Signed) HELMORE, HELMORE & CO.,
Chartered Accountants,
3, Grosvenor Gardens, S.W.1.

Average number of In-patients during year	249
Average cost per bed occupied	£144 19 10 per annum
Subscriptions and donations to the Festival Dinner amounted to	£4,373 19 2
Subscriptions received from the Ladies' Association amounted to	£74 11 0

Subscribers and Friends are cordially invited to visit the Hospital any afternoon between 2 and 5 o'clock; Saturdays, 2 to 5.30 p.m.

The Hospital is not quite a mile from East Putney Railway Station (District Railway), where cabs are obtainable. Putney Station (Southern Railway) is about a mile distant. Motor omnibuses (Services Nos. 93 and 85B) run from Putney Bridge Station (District Railway) to the top of Putney Hill, which is within three minutes' walk of the Hospital. A new Service (No. 131) from Wandsworth Town Hall to Hammersmith passes the Hospital.

FORM OF BEQUEST.

I bequeath to THE ROYAL HOSPITAL AND HOME FOR INCURABLES, PUTNEY, the sum of £ _____ free of duty, to be paid, together with the duty thereon, out of such part of my estate as can be lawfully bequeathed for charitable purposes, and to be applicable to the general purposes of such Institution, and I declare that the receipt of the Treasurer or other proper officer for the time being of such Institution shall be a sufficient discharge for the same.

N.B.—By virtue of the "Mortmain and Charitable Uses Act, 1891," land may be devised to a Charity, but it is liable to be sold within one year from the death of the Testator.

(NOTE.—When a Will has been already made, and it is afterwards desired to benefit the Hospital, it will be sufficient if the form on other side is filled up, detached, duly signed and witnessed in like manner as the Will itself, and carefully attached to the existing Will.)

Royal Hospital and Home for Incurables
PUTNEY
42, GRACECHURCH STREET, E.C.3

The Secretary will be much obliged to anyone who will send to him Name and Address of persons not already contributing, who are likely to subscribe to the Hospital.

NAME _____
ADDRESS _____

BANKERS' ORDER

193.....

Messrs.

Please pay now and annually to the A/c of the
Royal Hospital and Home for Incurables, Putney, at

MESSRS. GLYN, MILLS & Co., the sum of
Guineas.

£ : : _____

Subscribers who prefer making their Annual payments through their Bankers are invited to **Sign this Order** and return it to the Secretary of the Hospital, so that it may be noted and remitted to the Bankers.

The adoption of this plan saves trouble to the Subscriber, and facilitates the financial arrangements of the Hospital.

Remittance Form.

To CAPTAIN B. D. ARMSTRONG, Secretary, _____ Date _____ 193_____

ROYAL HOSPITAL AND HOME FOR INCURABLES, PUTNEY.
42, GRACECHURCH STREET, E.C. 3.

From* _____
Address _____

Sir, Enclosed you will find a _____ for £ _____
which _____ send you as† $\left\{ \begin{array}{l} \text{an Annual Subscription} \\ \text{a Donation} \\ \text{a Life Subscription} \end{array} \right\}$ in aid of the funds of the

ROYAL HOSPITAL AND HOME FOR
INCURABLES, PUTNEY.

(Signed) _____

AN ANNUAL SUBSCRIBER has one Vote at each Election for each Half-Guinea.
A DONATION entitles to Votes at the next ensuing Election only, Four Votes being given for each Guinea contributed.
A LIFE SUBSCRIBER has One Vote for Life at each Election for Five Guineas, and an additional Vote for Life for every additional Five Guineas.

* Please write name as it should be printed in the List of Governors and Donors.

† Kindly strike out the words not applicable.

CHEQUES TO BE CROSSED "Messrs. GLYN, MILLS & CO."

Inquiries are invited from intending Subscribers.

