



Royal Hospital for Neuro-disability

Royal Hospital for Neuro-disability Archive Service :  
Digital copy

ROYAL HOSPITAL FOR NEURO-DISABILITY:  
Administration: Governance records:  
Annual reports

Annual report, 1982

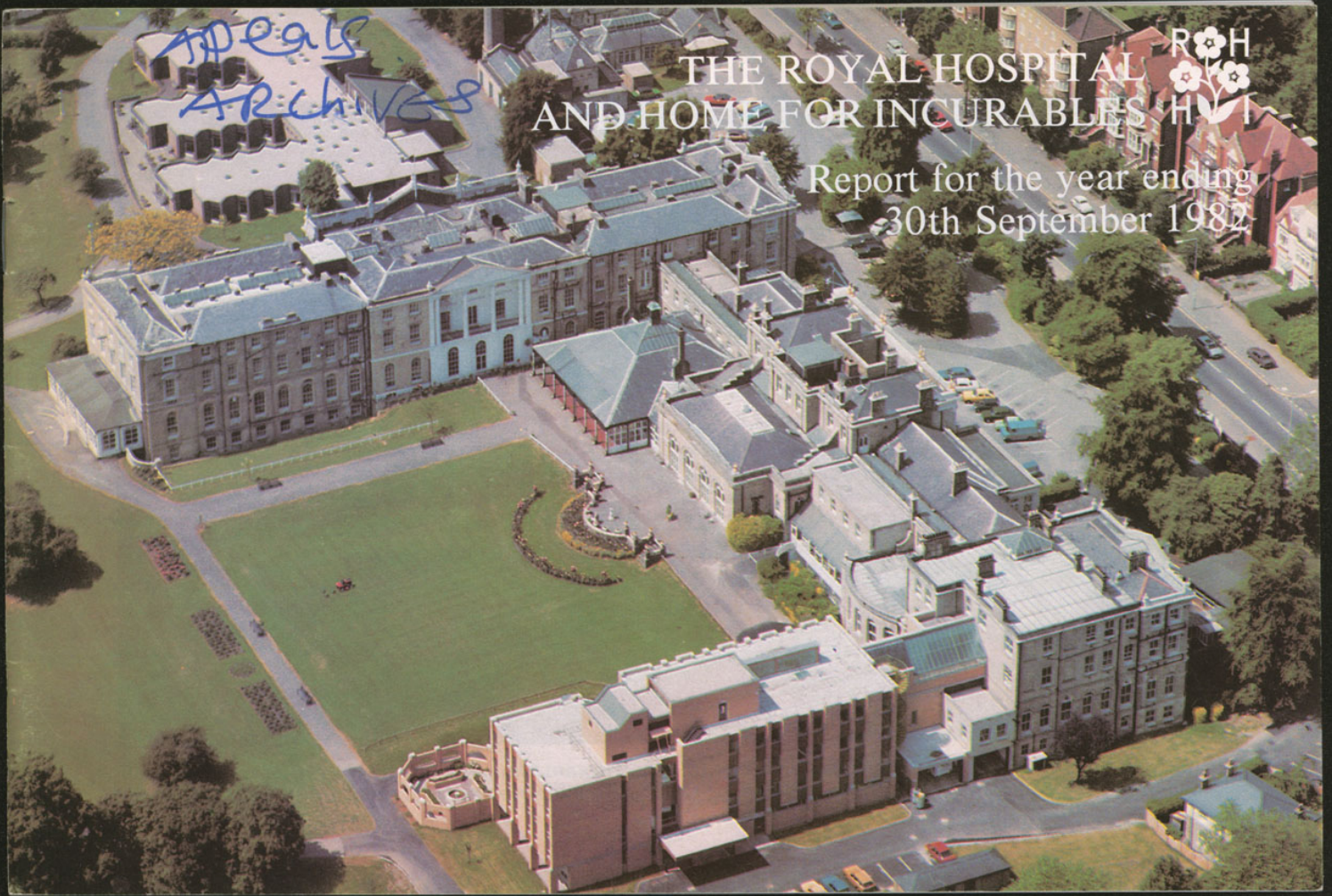
Ref No : GB 3544 RHN-AD-1-9

Appeals  
Archives

THE ROYAL HOSPITAL  
AND HOME FOR INCURABLES



Report for the year ending  
30th September 1982





The New Therapy Wing and other improvements to John Howard House at Brighton were opened on 18th September 1982 by Mrs J. F. Cumberlege JP., Chairman of Brighton Health Authority.

THE BRIGHTON HOSPITAL BOARD  
 CHAIRMAN  
 MRS J. F. CUMBERLEGE JP.

**PATRONS**

HER MAJESTY THE QUEEN  
 HER MAJESTY QUEEN ELIZABETH THE QUEEN MOTHER

**PRESIDENT**

HIS GRACE THE DUKE OF DEVONSHIRE PC MC

**VICE-PRESIDENTS**

THE LORD ROBOROUGH JP LLD	SIR DENIS TRUSCOTT GBE TD JP
JACK van ZWANENBERG Esq	THE RIGHT HON MARGERY LADY HACKING OBE
GENERAL SIR HORATIUS MURRAY GCB KBE DSO	THE RIGHT HON LORD AMULREE KBE MD FRCP
LADY SHONE	THE WORSHIPFUL THE MAYOR OF WANDSWORTH <i>(ex officio)</i>

#### BOARD OF MANAGEMENT

<sup>\*\*†</sup> C G VAUGHAN-LEE OBC Chairman  
<sup>\*\*†</sup> MRS AUDREY ARBUTHNOT Vice-Chairman  
<sup>†</sup> GORDON H POPHAM Esq Treasurer

<sup>°</sup> J N AGATE Esq CBE MA MD FRCP	<sup>**</sup> MRS BETTY KROOK	<sup>†</sup> ANTHONY T REED Esq FCA
<sup>**†</sup> LORD BANCROFT GCB	<sup>**</sup> MRS A J MEGLAUGHLIN SRN	<sup>†</sup> LEO SEYMOUR Esq
<sup>†</sup> M C BAUGHAN Esq	<sup>**</sup> J N MENDELSSOHN Esq	<sup>**</sup> MISS U A THOMAS
<sup>†</sup> J D BULLMORE Esq	<sup>**</sup> MRS JOHN MENDELSSOHN JP	<sup>**†</sup> MAJOR GENERAL SIR LESLIE
<sup>*</sup> J F BURRELL Esq CVO	<sup>†</sup> LADY NORTON MBE	<sup>†</sup> TYLER KBE CB DSO (Eng) CEng FIMechE
<sup>*</sup> MRS JENNIFER COOKE	<sup>†</sup> MRS SHIRLEY PALMER	<sup>*</sup> D WADDINGTON Esq MA
<sup>**†</sup> MRS ELSA DUNBAR CBE	<sup>*</sup> T PARRINGTON Esq	<sup>**</sup> MRS SUSAN WHITEHOUSE
<sup>**†</sup> MRS G I HABERSHON	<sup>*</sup> MRS ESMÉ POLLITZER JP	<sup>°</sup> SIR BRIAN WINDEYER KT FRCP
<sup>**</sup> M J P KEATING Esq FBIM FInst Pat	<sup>*</sup> LIEUTENANT-COLONEL R READHEAD DSO DL MA FBIM	<sup>°</sup> FRCS FRCS FRCP DMRE

<sup>°</sup> Member of the Executive Committee <sup>†</sup> Member of the Finance Committee <sup>\*\*</sup> Member of the House Committee

#### RESEARCH ADVISORY COMMITTEE

SIR BRIAN WINDEYER KT FRCP FRCS FRCP DMRE Chairman  
Professor A N EXTON-SMITH MA MD FRCP  
J N AGATE Esq CBE MA MD FRCP  
C J EARL Esq MD BS FRCP  
C G VAUGHAN-LEE Esq OBC  
JACK VAN ZWANENBERG Esq

#### MEDICAL STAFF COMMITTEE

J N AGATE Esq CBE MA MD FRCP Chairman  
W E S BAIN Esq FRCS Consultant Ophthalmic Surgeon  
A CATTERALL Esq FRCS Consultant Orthopaedic Surgeon  
F S COOKSEY Esq CBE MD FRCP Consultant in Physical Medicine  
Dr C JEAN DOW MRCGP FRCP Consultant Radiologist  
R GRAHAME Esq MD FRCP Consultant Physician in Rheumatic Diseases  
R KELLY Esq MD FRCP Consultant Neurologist  
A P H RANDLE Esq FRCP D Phys Med Consultant in Rheumatology and Rehabilitation  
G STERN Esq MD FRCP Consultant Neurologist

#### CHIEF EXECUTIVE

Colonel B E BLUNT BA FBIM

#### DIRECTOR OF MEDICAL & RESEARCH SERVICES

J WEDGWOOD Esq MA MD FRCP

#### RESEARCH FELLOWS

C B PARKER Esq FDS RCS, Facio-Maxillary Surgery  
MISS SARAH WILSON BSc, Research Psychologist  
MISS MYRTLE ZETTLIN BSc, Research Information

#### RESEARCH CONSULTANT ENGINEERS

E BOOTH Esq C Eng Ml Mech E  
G WYLIE Esq BSc C Eng MEE

#### PRINCIPAL MEDICAL OFFICER

DR MAUREEN A TUDOR MB BS D Obst RCOG

#### MEDICAL OFFICERS

W J HASTINGS SAYERS Esq LRCP LRCS LRFPs (John Howard House)  
A G HUFF Esq MB BS D Obst RCOG MRCP  
DR BARBARA OETLIKER BSc MB BS DCH DRCOG MRCP  
DR HAZEL RICHARDSON MA BM BChir MRCP  
DR IVY TRALL MB BS

#### VISITING CONSULTANTS

RADIOLOGY, DR C JEAN DOW MRCP FRCP  
FACIO MAXILLARY, C B PARKER Esq FDS RCS  
OPHTHALMOLOGY, WES BAIN Esq FRCS  
N MOORES Esq FRCS

#### DENTAL SURGEONS

B OLIVER Esq LDS  
R J HUNTER Esq LDS RCS (John Howard House)

#### PRINCIPAL THERAPY OFFICER

A Mc L DOWELL Esq BA MCSP Dip TP  
SUPERINTENDENT PHYSIOTHERAPIST, MRS P M POPE  
BA MGP  
HEAD OCCUPATIONAL THERAPIST, MRS E M WILSON Dip COT  
SENIOR SPEECH THERAPIST, MRS R GILCHRIST LCI

#### MATRON & DIRECTOR OF NURSING SERVICES

MISS M BLINCOE SRN RCN HV RNT

#### NURSE TUTOR

MRS E D ANDERSON SRN RCNT RNT DN  
SENIOR NURSING OFFICER JOHN HOWARD HOUSE  
D BENFELL Esq SRN RMN CIGN

#### DIRECTOR OF APPEALS & PUBLICITY and SECRETARY OF THE DEVELOPMENT TRUST FOR THE YOUNG DISABLED

AIR COMMODORE D F RIXSON OBE DFC AFC FBIM

#### CHIEF ACCOUNTANT

A O HOWIE Esq CA FBIM

#### CHIEF PHARMACIST

K M ROHLFING Esq AUA MPS FRSH

#### SUPPLIES & CATERING OFFICER

W H BIRD Esq

#### CONSULTANT HEALTH & SAFETY

J R JARRATT Esq MSc Chem FRIC CGIA MISO Dip SM

#### SENIOR CHAPLAIN

REVEREND T J THOMAS BA

#### BANKERS

NATIONAL WESTMINSTER BANK PLC, 250 Wimbledon Park Road, SW19 6ND  
WILLIAMS & GLYN'S BANK PLC 67 Lombard Street, EC3

#### SOLICITORS

MESSRS FARRER & CO., 85 Lincoln's Inn Fields, WC2

#### INVESTMENT BANKERS

J HENRY SCHRODER WAGG & CO PLC, 120 Cheapside, EC2

#### AUDITORS

MESSRS HELMORE, HELMORE & CO, Chartered Accountants, 35/37 Grosvenor Gardens, SW1

#### ADVERTISING CONSULTANTS

J WALTER THOMPSON COMPANY PLC, 40 Berkeley Square, W1



The Main Hospital viewed from the South.

#### A Year of Progress

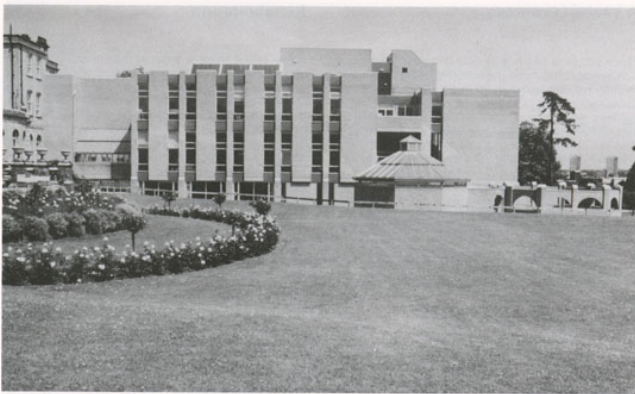
Much progress has been made this year. Our major achievement has been the substantial improvements to John Howard House at Brighton. Last year's report contained an artist's impression of what we hoped to achieve; we are now pleased to report that the building was completed on our target date of 6th August, and that the splendid new facilities are now in use. The Therapy Wing at John Howard House provides accommodation and equipment for remedial therapy, which are comparable with those at Putney, and the living areas for our resident patients there have been considerably enhanced with a much larger Day Room, a Sun Terrace, and four additional bedrooms. With these improvements, we are not only able to provide better therapy treatment for our residents and holiday patients, but we can now offer remedial therapy and rehabilitation to patients in the Brighton area on a daily basis.

At the Main Hospital at Putney, the Occupational Therapy accommodation has been refurbished and reorganised, the Nurses Home and the staff flats have been upgraded, and major repairs to the Hospital roof and to the Entrance Hall ceiling have been carried out.

#### Rehabilitation

Some might think it strange that remedial therapy should play a part in the care of "incurable" disability. We do not share this view. Not only does the specialised remedial therapy, which we are able to give in Alexandra Wing, prevent deterioration in our patients condition, but often they show considerable improvement on their state at admission and, by suitable treatment and provision of mechanical or electronic aids, they can be made more independent and better able to enjoy the wide range of facilities available both in and outside the Hospital. The Haslemere Hydrotherapy Pool is in full use. The Occupational Therapy Department, with the older areas upgraded and the new Therapy Kitchen, has developed into a lively therapeutic and activities unit. The Speech Therapy Department is closely involved with the therapy of speech and feeding problems and the provision of electronic speech aids. There is a good team spirit and sense of purpose in all the therapy departments, and this has led to full recruitment and high quality staff.

The facilities we can now offer to Day Patients have been welcomed by Health and Local Authorities, who feel that they supply a need which is not easily obtainable elsewhere.



Alexandra Wing for Research and Rehabilitation.

### Medical Services

In recent years we have been accepting more severely disabled patients than in the past. They all require readily available and experienced medical care. The Principal Medical Officer and her team of four part-time Medical Officers from local general practices supply a service, which provides an unequalled standard of medical care for severely disabled people, many of whom have deteriorating diseases and are liable to suffer complex and acute clinical problems. The training advantages have also begun to attract junior hospital doctors, who are interested in gaining experience in this subject.

### Nursing Services

Research, rehabilitation and medical care cannot be carried out without a background of trained and experienced nursing. We are most fortunate in having an excellent nursing staff, who continue to bear the heavy load of care with selfless devotion, and we are greatly indebted to them. It is particularly pleasing to see how well the remedial therapists and the nursing staff are working together and are sharing experience

in the difficulties of patient care in the wards. The introduction of ward-based therapists, as a pilot scheme, has proved a valuable advance in this direction.

Many question the need for the care of disabled people to be in the hands of professionally trained health care staff, and this may be true for a moderate degree of disability. At the Royal Hospital and Home, however, we are able to accept, without reservation, the most severely handicapped people, often with multiple disablement or suffering from progressively deteriorating diseases. Without our professional staff, the Hospital element of the RHHH, these residents could not be kept in the optimum state of health for them to benefit fully from the wide range of activities and facilities which the Home component provides. The Hospital and Home concept of our Founder meets this need in a way which is not to be found elsewhere in this country.

### Research

One of the foremost aims of Alexandra Wing has been to develop research into the needs of handicapped people, and hand in hand with this must go education.



Automated Psychological Testing.

The electrically powered wheel-chair with power elevating seat, head-rest and foot-rest, designed by Mr. Eric Booth.



The Wing was designed for both these purposes, as well as providing up-to-date facilities for rehabilitation. Our research efforts, which are largely funded by the Development Trust for the Young Disabled, have so far been concentrated on the following areas:

- a. Computer-based psychological testing to enable severely handicapped people, with communication problems as a result of their disability, to be assessed. Miss Sarah Wilson, our Research Psychologist, received one of four national awards in the International Year of Disabled people in recognition of this work.
- b. Mr Colin Parker, our Facio-Maxillary Surgeon, has developed an intra-oral microswitch device, which can be used to control equipment, such as a powered wheelchair, for use by severely disabled people.
- c. Mr Eric Booth, our Consultant Engineer, has pioneered a design for a powered wheelchair chassis with many advantages over the standard powered chairs, one of which includes an elevating "Hi-Lo" seat.
- d. Research into the care requirements of patients, based on a detailed survey, is also progressing

well under the supervision of Miss Myrtle Zeithyn, our Research Information Officer, with assistance from Dr Derek Duckworth of Kent University on the development of this project.

All these projects and a number of smaller ones are under the overall direction of the Medical Director, and many of them have been of direct benefit to the residents of the Hospital, as well as pioneering developments in the field of research for handicapped people.

### Education

Ten seminars have been held this year and they have attracted audiences from all over the Country and overseas. Many eminent speakers have contributed to the seminars on subjects ranging from engineering for the disabled to problems of nursing and physical therapy. At a local level, lunch-time clinical meetings continue to attract distinguished speakers and good audiences. In the nursing field, the Joint Board of Clinical Nursing Studies' courses, which are run by the Hospital, are nationally recognised as an important training element in the care of disabled people.

Not all our teaching is conducted at seminars and lectures. Medical students, nursing students, and students in the physical therapies take part in regular teaching programmes at the Hospital. We are particularly glad to have well-established links with the Middlesex and St. George's Hospitals in this connection. Our Pharmacy gives post-graduate pharmacists practical experience in association with SW Thames Regional Health Authority and undertakes the training of technicians on a day release basis.

In addition to publications in professional journals, several publications by the Hospital staff have been made available by the Development Trust and have been widely circulated.

#### Board of Management

Mrs Susan Whitehouse, who is also Chairman of the Authorised Visitors Committee, is a welcome newcomer to the Board this year.

#### The Development Trust for the Young Disabled

The capital cost of £167,000 for the improvements to John Howard House was underwritten by the Trust, and it has been met in full by our legacies' income, balanced by donations from the Trust and elsewhere. Our research projects for handicapped people and some of our seminars would not have been possible without financial support from the Trust. Looking to the future, a further extension of the Hospital at Putney is under consideration, and the Trust will play a major part in finding the funds for it over the next few years. The Chairman would very much appreciate all our benefactors' support for this new project, the details of which will be announced shortly.

#### County Committees

There are over 200 active members in our County Committees, and they have done wonders on our behalf during this very difficult year. Apart from their financial support, the Committees do much to spread the word about the work of the Hospital and this helps to swell the ground support that we need so badly. The



The Haslemere Hydrotherapy Pool.

The Herb Garden.







Physiotherapy at John Howard House.



Occupational Therapy at John Howard House.



Remedial Gymnasium at Putney.



Annual Garden Party at Putney.

Sussex Committee, led by Mrs John Cama, is particularly associated with John Howard House and a number of her Committee are also Authorised Visitors there.

#### **Donations and Supporters**

We are very conscious of the problems of people, particularly those who are retired, in supporting charities like ourselves, but we are most grateful to those who have changed from donations to Deeds of Covenant, where we as a charity benefit so much more. We have received growing interest and support this year from young people in schools and colleges throughout the Country. This is a most encouraging development, which augurs well for the future of the Charity.

#### **Legacies**

As will be seen elsewhere in the report, it has been a record year as far as legacies are concerned. Our continuing legacy success over recent years has provided a firm financial background to our progressive building programmes: from the inception of the original

holiday home at John Howard House in 1974, Chatsworth Wing in 1976, Alexandra Wing in 1980, the extensions at John Howard House in 1982, to our plans for the future. All our readers can help here tremendously by suggesting to their friends that legacy gifts may help them over taxation, and that a legacy, coming as it does at the end of a life, will do much to help someone else, who has still some time to go. It would enable the RHHI at Putney and Brighton to help our patients to have a longer, happier and more useful life.

#### **Authorised Visitors and Voluntary Helpers**

Our special thanks go to all those who generously give their time to visiting patients, and to helping with the work of the Hospital. They do so much to help our patients, and to relieve the pressure on our regular staff.

#### **Finance**

Details of this year's income and expenditure and the Balance Sheet are set out at the end of this report.



The Douglas Gracey Verandah.



The De Lancey Lowe Room.



The Enlarged Day Room at John Howard House.

**Mayor of Wandsworth 1981/82 — Councillor Michael D. Chartres, F.C.A.**

The Mayor of Wandsworth very kindly made us the main charity for his Mayoral year and both he and his wife as Mayoress played a constant part in our activities. Their efforts resulted in the sum of £6,050 towards our Therapy Kitchen, which is so much appreciated and used by our patients.

all our staff and to all those who have helped the Royal Hospital and Home this year.

No charity can hope to flourish in these difficult times without such devotion and generosity. The marvellous support, which we continue to receive from every side, encourages and inspires us to redouble our efforts in advancing the scope of the Charity's work for the cause of the incurably disabled.

**Renewed Thanks**

In concluding their report to the Governors, the Board of Management express their sincere appreciation to

**C G VAUGHAN-LEE**  
Chairman of the Board of Management

All Governors of the RHHI are reminded that they are cordially invited to attend the Annual General Meeting in the Conference Room in Alexandra Wing at the Hospital at 2.30 p.m. on Wednesday 19th January 1983. The meeting will be presided over by our President, His Grace the Duke of Devonshire.



The Lower Sun Terrace at John Howard House.



The Therapy Kitchen.



The Upper Sun Terrace at John Howard House.

**Legacies and Residuary Bequests Received** *(in £ amounts)*  
 Year ended 30th September 1982

	£		£		£
ADAMS, Mrs L A	3,191	GILLIAT, Mrs B M	250	SASSE, Mrs A E	6,000
ALLEN, Miss M D V	250	HARDING, Mrs M	34,852	SASSE, L	2,000
ARNOLD, Mrs M E	35,000	HEARD, Mrs L G	1,857	SELLER, F R Will Trust	327
ATKINSON, Mrs P	500	HOCKING, E	4,424	Rt Hon LORD	
BAGALEY, W H	384	HOGG, W T	91,007	SKELMERSDALE'S Will Trust	1,000
BALCOMBE, Mrs P E	2,007	HOWLEY-SIM, Mrs M A D F	6,177	STANDFIELD, Miss N W M	16,500
BROOKE-BOOTH, Mrs D G	20,750	HOYES, Miss M G	501	STOREY, H R	5,829
BROUGHTMAN, Mrs M	467	HUNT, Mrs M	500	SUMNER, Mr & Mrs P J P	1,539
CHANDLER, G H Will Trust	5,587	HUNTINGFORD, Mrs F V	15,142	TYRRELL, Miss W H A	6,000
CHOLDCROFT, E W	9,880	KENNETT, Miss H W	1,000	WADE, Miss N V	8,000
CLUTTON, Mrs H	347	KEYES, J R	917	WARD, Mrs F E	1,901
COLLARD, W	7,841	LEAVER, Mrs B J	1,000	WARNER, Miss O B	1,005
COLLINS, Miss O	100	LINCOLN, Mrs C I	500	WARTON, Miss D I	109
CONNING, Miss K M	250	LINDREA, Mrs E M	500	WATERS, Mrs V	5,000
COPE, Mrs E M	8,662	LOVELL, E P	112	WEST, Miss A M	897
CRISPIN, J D	300	LUTHER, Miss W	5,019	WHITE, Miss M	784
CUMINGS, Miss E M	1,284	MACKWORTH-YOUNG, Mrs N L M	500	WHITLEY-JONES, Mrs B E M	250
CUNNINGHAM, Mrs M A	8,587	MARRIOTT, Mrs M	38,573	WILLIAMS, Mrs M A	100
DEAN, Miss J E	12,808	NEIL, Miss E K F	457	WINGFIELD-DIGBY, Miss M R	100
DONNET, Mrs M L D	1,000	NORTON, Mrs E M	3,958	WOOD, J W	1,000
EGERTON-GREEN, Mrs A H	532	OSTLER, Miss G M	10,000	WOOLCOTT, Miss E H	500
ELLIS, A R	200	OVENDEN, Miss G M	600	WRIGHT, B H	50
FEAR, Rev G B	108	PALMER, E E G	5,000	Amounts under £50 (5)	143
FFRENCH, Miss E E N	369	ROBINSON, Mrs M E	100	Refunds of Income Tax	3,627
GIBBS, Mrs M W	1,000				<u>407,011</u>

**Income and Expenditure Account  
for the year ended 30 September 1982**

1981	NOTE	GENERAL FUND	RESEARCH FUND	OTHER FUNDS	TOTAL FUNDS
£		£	£	£	£
<b>INCOME</b>					
156,735		131,389	14,182		145,571
2,993,281		3,402,591			3,402,591
226,734	2	129,140	73,519	26,781	229,440
		14,935		(14,935)	
<u>3,375,750</u>		<u>3,678,055</u>	<u>87,701</u>	<u>11,846</u>	<u>3,777,602</u>
<b>EXPENDITURE</b>					
181,256		205,813			205,813
6,566	3 & 4	Cr 56,170			Cr 56,170
262,740	4	283,722	17,000		300,722
2,432,941	4 & 5	2,717,329	42,490	2,759,819	
113,989	4	107,987	19,147	1,569	128,683
127,129	4	121,953	4,545		126,498
147,325		208,237			208,237
108,313	4	90,435	9,564		99,999
940		512			512
7,565				6,892	6,892
<u>3,387,764</u>		<u>3,679,798</u>	<u>92,746</u>	<u>4,461</u>	<u>3,781,005</u>
(12,014)		( 1,743)	( 5,045)	3,385	( 3,403)

**Balance Sheet  
as at 30 September 1982**

1981	NOTE	GENERAL FUND	RESEARCH FUND	OTHER FUNDS	TOTAL FUNDS
£		£	£	£	£
<b>ASSETS EMPLOYED</b>					
18,401					18,401
	1	18,895			18,895
1,425,037					1,425,037
	6	938,292	674,159	225,090	1,837,541
559,053		482,697	17,075	5,000	484,772
57,153		83,943			83,043
223,779		381,072	86,083		467,355
106,384		70,915		3,385	74,300
<u>944,374</u>		<u>997,927</u>	<u>103,158</u>	<u>8,385</u>	<u>1,109,470</u>
414,580		640,359	1,885		642,244
4,000		3,000			3,000
418,580		643,359	1,885		645,244
525,794		354,068	101,273	8,385	464,226
<u>1,969,232</u>		<u>1,311,756</u>	<u>775,432</u>	<u>232,475</u>	<u>2,320,662</u>
<b>FINANCED BY</b>					
1,836,219		1,067,267	673,215	228,750	1,969,232
215,429		407,011			407,011
204,255	7	181,460			181,460
81,759		( 10,393)			( 10,393)
2,337,652		1,474,278	844,307	230,090	2,548,675
( 356,406)		( 160,780)	( 63,830)		( 224,610)
( 12,014)	8 & 9	( 1,743)	( 5,045)	3,385	( 3,403)
<u>1,969,232</u>		<u>1,311,756</u>	<u>775,432</u>	<u>232,475</u>	<u>2,320,662</u>

We have examined the above Balance Sheet dated 30 September 1982 and the attached Income and Expenditure Account for the year to that date with the books and vouchers relating thereto, which are in accordance therewith. We have verified the whole of the investments and bank balances as provided by Bye-Law 33 of the Royal Charter granted on 20 June 1919.

1 December 1982

HELMORE, HELMORE & CO., Chartered Accountants  
35/37 Grosvenor Gardens, London SW1 0BY

## Notes on the Accounts

### 1. ACCOUNTING POLICIES:

- 1.1 Income is taken to the credit of the revenue account on an accruals basis.
- 1.2 Expenditure is charged to the revenue account on an accruals basis inclusive of VAT.
- 1.3 Amounts received from legacies are allocated to capital account.
- 1.4 Expenditure on buildings, furnishings and equipment is written off in the year in which the expenditure is incurred. The Balance Sheet therefore shows no value for hospital premises, land, nurses' homes, staff housing, furniture and equipment.
- 1.5 Donated equipment and supplies are included within the appropriate expenditure at the cost to the donor, and within donations.
- 1.6 Fixed Assets comprises ambulances and vans which are capitalised and depreciated straightline over the estimated working life.

	1982	1981
	£	£
INVESTMENT INCOME		
is shown after deducting investment Banker's fees as follows:		
General Fund	1,863	917
Research Fund	919	915
	2,782	1,835

	1982	1981
	£	£
DISPENSARY		
Income for the year	277,352	188,912
Less Cost of prescriptions	(221,152)	(194,478)
	56,170	5,566

	1982	1981
	£	£
SALARIES AND WAGES are included in other sections for the following:		
Dispensary (under Dispensary)	60,101	47,749
Laundry (under Domestic)	66,137	59,909
Grounds Maintenance (under Miscellaneous)	11,871	11,557
Administration	105,738	104,962
Appeals and Publicity	41,580	37,893
	285,427	262,070

### 5. SALARIES AND WAGES of Medical, Nursing, Therapy, Research, Domestic and Engineering staff is shown after deducting Lodging and Meals

70,789      66,749

### 6. INVESTMENTS

FUND	1982		1981	
	Book Value	Market Value	Book Value	Market Value
	£	£	£	£
General	938,292	1,423,976	532,994	741,789
Research	674,159	714,640	666,482	560,292
Endowment	88,882	94,313	93,507	81,021
Pensioners	88,272	117,728	84,774	93,815
Lopes Chaplain's Stipend Endowment	1,772	2,078	1,727	1,723
Robinson Trust	25,717	57,585	25,717	43,119
Patients Amenities	5,062	5,945	4,472	4,466
Sir John Howard Trust	15,385	16,643	15,384	12,464
	1,837,541	2,432,906	1,425,037	1,538,996

### 7. GIFTS OF CAPITAL

	Research Fund
	£
Development Trust for the Young Disabled	181,462

### 8. CAPITAL EXPENDITURE WRITTEN OFF

	General Fund	Research Fund
	£	£
Construction of Alexandra Wing		63,830
Construction of Therapy Wing and improvements at John Howard House	160,780	

### 9. CAPITAL COMMITMENT

The estimated amount outstanding, including consultant's fees, on the contract for the construction of the Therapy Wing at Brighton is ...

£ 6,220

### 10. OTHER FUNDS

	Endowment	Pensioners	Lopes Chaplain's Stipend Endowment	Robinson Trust	Patients Amenities	Sir John Howard Trust	Total
	£	£	£	£	£	£	£
ASSETS EMPLOYED							
Investments at cost	88,882	88,272	1,772	25,717	5,062	15,385	225,090
Current Assets	5,000						5,000
Sundry Debtors		3,385					3,385
Cash at Bank and on Hand							
	93,882	91,657	1,772	25,717	5,062	15,385	233,475
FINANCED BY							
Balances on Funds at 1.10.81	93,507	87,449	1,727	25,717	4,965	15,385	228,750
Gain on sale or redemption of investments	375	823	45		97		1,340
Surplus (deficit) for year transferred	—	3,385	—	—	—	—	3,385
	93,882	91,657	1,772	25,717	5,062	15,385	233,475
INCOME							
Investment Income	8,121	11,277	194	4,750	569	1,870	26,781
— Transferred to General Fund	( 8,121)	—	( 194)	( 4,750)	—	( 1,870)	( 14,935)
	—	11,277	—	—	569	—	11,846
EXPENDITURE							
Miscellaneous expenses		1,000			569		1,569
Pensions and Grants to Patients living at home		6,892					6,892
		7,892			569		8,461
Surplus (deficit) for year transferred		3,385			—		3,385

**CODICIL FOR EXISTING WILL**

There have been many changes in Personal Estate Duty and you may care to add a Codicil to your existing Will so that the Royal Hospital and Home for Incurables can benefit without affecting the other beneficiaries.

Through your help we will be able to further our aim of the well-being, independence, and medical care for severely disabled people. Please consult your Solicitor (or we will be happy to do this for you) and consider this typical Codicil.

I ..... of .....  
..... a .....

**HEREBY DECLARE** this to be the ..... Codicil to my Will which bears date the ..... day of ..... One thousand nine hundred and .....

1. I GIVE to the Royal Hospital and Home for Incurables, West Hill, Putney, London, SW15 3SW the sum of (in words) ..... (£ .....) free of duty **AND I DECLARE** that the receipt of the Treasurer or Secretary for the time being shall be a good and sufficient discharge for the same.

2. IN all other respects I **CONFIRM** my said Will.

**IN WITNESS** whereof I have hereunto set my hand this ..... day of ..... One thousand nine hundred and .....

**SIGNED** by the said ..... as the )  
..... Codicil to his/her Will which bears date the ..... )  
day of ..... 19 ..... in the presence of us both together )  
who at his/her request in his/her presence and in the presence )  
of each other have hereunto subscribed our names as )  
witnesses.

Signature of First Witness ..... Signature of Second Witness .....  
Address ..... Address .....  
Occupation ..... Occupation .....

**Legacy**

“I give to the ROYAL HOSPITAL AND HOME FOR INCURABLES, WEST HILL, PUTNEY, LONDON SW15 3SW the sum of £ ..... free of duty. And I direct that the receipt of the Treasurer or Secretary for the time being shall be a good and sufficient discharge to my Executors.”

**Residue**

“I give all my property not otherwise disposed of by this my Will subject to and after payment of my funeral and testamentary expenses to the ROYAL HOSPITAL AND HOME FOR INCURABLES, WEST HILL, PUTNEY, LONDON SW15 3SW. And I direct etc. (as above).”



John Howard House, our Hospital at Brighton for 34 long-stay patients and for out-patient rehabilitation.